

P. Prince

CYLINDERS & ACCESSORIES



Prince Manufacturing Corporation
North Sioux City, South Dakota

TABLE OF CONTENTS

HYDRAULIC CYLINDERS

Custom Cylinders

Welded Cylinders

BORE SIZE	NAME	MODEL	PAGE
1 1/2"	Sword	SAE-19400	C4
2"	Sword	SAE-42000	C4
2"	Magnum	PC-2000CL	C9
2 1/2"	Sword	SAE-42500	C4
2 1/2"	Magnum	PC-2500CL	C9
2 1/2"	Royal	PMC-5400	C5
3"	Sword	SAE-43000	C4
3"	Sword	SAE-43000	C4
3"	Magnum	PC-3000CL	C9
3 1/2"	Sword	SAE-43500	C4
3 1/2"	Magnum	PC-3500CL	C9
3 1/2"	Royal	PMC-5500	C5
4"	Sword	SAE-44000	C4
4"	Magnum	PC-4000CL	C9
4"	Royal	PMC-5600	C5
4"	Fortress	SAE-64000	C6
4"	Magnum	PC-4000XT	C10
4 1/2"	Fortress	SAE-64500	C6
4 1/2"	Magnum	PC-4500XT	C10
5"	Gladiator	SAE-21000	C7
6"	Gladiator	SAE-22000	C7
3"	Top Link	BD-0228	C20
8"	8" Bore	SAE-68000	C8

PAGE
C3

Tie-Rod Cylinders

BORE SIZE	NAME	MODEL	PAGE
2"	Majestic	SAE-8400	C18
2"	3000 PSI	B200000	C13-C16
2 1/2"	Majestic	SAE-7000	C18
2 1/2"	3000 PSI	B250000	C13-C16
3"	Majestic	SAE-7100	C18
3"	3000 PSI	B300000	C13-C16
3 1/2"	Majestic	SAE-7200A	C18
3 1/2"	3000 PSI	B350000	C13-C16
4"	Majestic	SAE-8600	C18
4"	3000 PSI	C400000	C18
	Heavy Duty		
4"	3000 PSI	B400000	C13-C16
4 1/2"	3000 PSI	B450000	C13-C16
5"	Majestic	SAE-8200	C18
5"	3000 PSI	B500000	C13-C16
	Series Cylinders		C17

Accessories

Accessories	C19-C26	Filters - Up to 20 GPM	C25	Pins 1 1/4" Dia.	C22
Bushing - Pin Hole	C22	Filters - Up to 45 GPM	C26	Stroke Control - Collars	C21
Breathers	C22	Gauges	C22	Stroke Control - Sleeve	C21
Clips - Cotters	C22	Hand Pump	C23	Valve - Restrictor	C21
Filters - Return Line 3/4"	C24	Remote Stroke Control Valve	C19		
Filters - Return Line 1 1/4"	C24	Pins - 1" Dia.	C22		

NOTE: PSI ratings listed in this catalog provide a minimum safety factor of 2:1 based on burst strength of the cylinder body. Column Load limits result from longer strokes and can greatly reduce the safe operating pressure. Any reference to intermittent pressure ratings in our literature no longer apply. Unless otherwise specified, our cylinders are designed for use with a good quality petroleum-based hydraulic fluid. Please contact our Engineering Department for help.

PRINCE FOR EXCELLENT SERVICE AND HIGH QUALITY

Pride in individual work and accomplishment is the trade. It means more than just getting the order out. All cylinders or components, whatever the size or type get individual skilled attention. You will find that Prince cylinders meet all of your highest requirements and that you receive years of maintenance-free dependable usage. Prince builds most of their own tools, jigs and fixtures with a fully staffed and equipped tool room. Modern precision equipment is

utilized to produce and maintain these high production tools. Prince maintains a vast assortment of tubing, bars, casting and packing to give customers the best possible service available. Prince Manufacturing is relieved of any liability due to typographical errors in specifications. If you have any questions regarding any product specifications, please contact your representative.



Made in the U.S.A.

EXECUTIVE SUMMARY:

Custom cylinder designs provide our customers with a competitive advantage as a result of a collaborative design approach which delivers an optimized solution to meet their needs. Custom cylinder designs translate into a durable product, compact in size and weight and packed with integrated features like rephasing, cushioning, valve cavities, position sensors and more. Prince has over 65 years of experience producing custom cylinder designs utilizing the latest CAD.

MANUFACTURING CAPABILITIES:

- Welded designs with 1" to 20" Bores
- Tie Rod Designs with 2" to 5" Bores
- Large Bore Air Cylinders
- Cylinder-style Accumulators
- Stroke Lengths up to 50 feet
- Designed for Pressures up to 7,500 PSI

CUSTOM CYLINDER FEATURES:

- Integrated Linear Position Sensors
- Built-in Valves and Manifolds
- Double Ended cylinder designs
- Integrated Cushioning and Rephasing
- Safety Designs with Velocity Fuses
- Spherical and High-Wear Bushings
- Custom Mounts and End Fittings
- High-Strength/Weight-Saving Materials
- Color Matched Paint and Labeling

QUALITY:

- Products 100% Tested
- ISO 9001:2008 Certified
- Real-time Quality Process Monitoring
- In-house Gravimetric Cleanliness Testing
- Gauge calibration Traceable to NIST standards
- Oil filtration to ISO 4406: 1999 19/17/14 Standard

ENGINEERING AND R&D SUPPORT:

- Factory Direct Sales Support
- Burst Testing (Up to 15,000 PSI)
- Fatigue and Impulse Testing
- 3D Modeling Design (AutoDesk Inventor)
- Dedicated CASS and B117 Corrosion Testing
- Finite Element Analysis (DFMEA and PFMEA)

**SERVING OIL & GAS • MINING • CONSTRUCTION • DEMOLITION •
AGRICULTURE • TRANSPORTATION MARKETS**



THE SWORD LINE

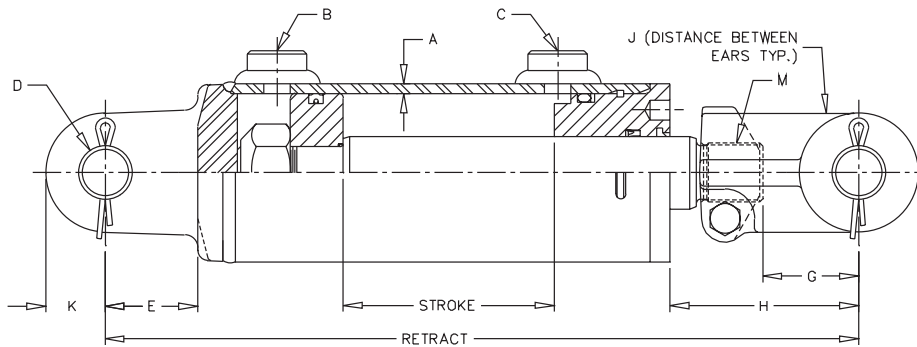
ALL PURPOSE LINE

THE "SWORD" Welded-DA-Heavy Duty-3000 PSI



FEATURES:

- Skived/honed tubing
- Heavy duty welded construction
- Chromed, ground & polished piston rod
- Ductile iron piston, gland & clevis, cast steel base end
- Urethane u-cup & urethane wiper in gland, crown seal on piston
- Square ring gland retainer provides positive lock
- Pins, clips & cotters included
- Standard color is black
- Stroke control may be installed on 8" strokes

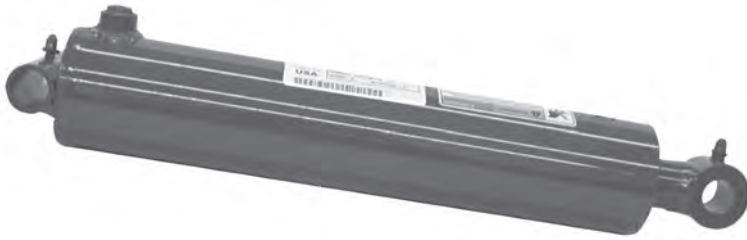


Rods are sized for a maximum safe push load (2:1 safety factor) given in the table. This is based on the pin configuration shown with no center support.

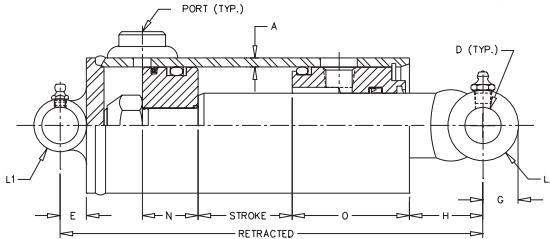
Model No.	Style	Wt.	PSI	Column Load (Lbs.)	Retract	Rod Dia.	A	B SAE	C SAE	D	E	G	H	J	K	M
SAE-19408*	1 1/2 x 8	13	3000	FULL PSI	20 1/4	3/4	3/16	#6	#6	.765	2 5/8	2 5/8	5 1/4	5/8	3/4	-
SAE-19410*	1 1/2 x 10	14	3000	4,600 LBS	20 1/4	3/4	3/16	#6	#6	.765	2 5/8	2 5/8	3 1/4	5/8	3/4	-
SAE-19412*	1 1/2 x 12	16	3000	3,525 LBS	22 1/4	3/4	3/16	#6	#6	.765	2 5/8	2 5/8	3 1/4	5/8	3/4	-
SAE-19416*	1 1/2 x 16	20	3000	1,525 LBS	31 1/2	3/4	3/16	#6	#6	.765	2 5/8	2 5/8	8 1/2	5/8	3/4	-
SAE-42008	2 x 8	19	3000	FULL PSI	20 1/4	1 1/8	3/16	#8	#8	1.015	1 3/4	1 13/16	5 9/16	1 1/16	1	1 1/8-12
SAE-42010	2 x 10	20	3000	FULL PSI	20 1/4	1 1/8	3/16	#8	#8	1.015	1 3/4	1 13/16	3 9/16	1 1/16	1	1 1/8-12
SAE-42012	2 x 12	22	3000	FULL PSI	22 1/4	1 1/8	3/16	#8	#8	1.015	1 3/4	1 13/16	3 9/16	1 1/16	1	1 1/8-12
SAE-42016	2 x 16	25	3000	FULL PSI	31 1/2	1 1/8	3/16	#8	#8	1.015	1 3/4	1 13/16	8 13/16	1 1/16	1	1 1/8-12
SAE-42020	2 x 20	28	3000	7,575 LBS	30 1/4	1 1/8	3/16	#8	#8	1.015	1 3/4	1 13/16	3 9/16	1 1/16	1	1 1/8-12
SAE-42024	2 x 24	31	3000	5,600 LBS	34 1/4	1 1/8	3/16	#8	#8	1.015	1 3/4	1 13/16	3 9/16	1 1/16	1	1 1/8-12
SAE-42508	2 1/2 x 8	21	3000	FULL PSI	20 1/4	1 1/4	3/16	#8	#8	1.015	1 3/4	1 13/16	5 9/16	1 1/16	1	1 1/8-12
SAE-42510	2 1/2 x 10	22	3000	FULL PSI	20 1/4	1 1/4	3/16	#8	#8	1.015	1 3/4	1 13/16	3 9/16	1 1/16	1	1 1/8-12
SAE-42512	2 1/2 x 12	23	3000	FULL PSI	22 1/4	1 1/4	3/16	#8	#8	1.015	1 3/4	1 13/16	3 9/16	1 1/16	1	1 1/8-12
SAE-42516	2 1/2 x 16	27	3000	10,800 LBS	31 1/2	1 1/4	3/16	#8	#8	1.015	1 3/4	1 13/16	8 13/16	1 1/16	1	1 1/8-12
SAE-42520	2 1/2 x 20	31	3000	11,700 LBS	30 1/4	1 1/4	3/16	#8	#8	1.015	1 3/4	1 13/16	3 9/16	1 1/16	1	1 1/8-12
SAE-42524	2 1/2 x 24	35	3000	8,600 LBS	34 1/4	1 1/4	3/16	#8	#8	1.015	1 3/4	1 13/16	3 9/16	1 1/16	1	1 1/8-12
SAE-43008	3 x 8	23	3000	FULL PSI	20 1/4	1 3/8	3/16	#8	#8	1.015	1 3/4	1 13/16	5 9/16	1 1/16	1 1/8	1 1/8-12
SAE-43010	3 x 10	26	3000	FULL PSI	20 1/4	1 3/8	3/16	#8	#8	1.015	1 3/4	1 13/16	3 9/16	1 1/16	1 1/8	1 1/8-12
SAE-43012	3 x 12	28	3000	FULL PSI	22 1/4	1 3/8	3/16	#8	#8	1.015	1 3/4	1 13/16	3 9/16	1 1/16	1 1/8	1 1/8-12
SAE-43016	3 x 16	33	3000	16,900 LBS	31 1/2	1 3/8	3/16	#8	#8	1.015	1 3/4	1 13/16	8 13/16	1 1/16	1 1/8	1 1/8-12
SAE-43020	3 x 20	39	3000	17,300 LBS	30 1/4	1 3/8	3/16	#8	#8	1.015	1 3/4	1 13/16	3 9/16	1 1/16	1 1/8	1 1/8-12
SAE-43024	3 x 24	43	3000	12,800 LBS	34 1/4	1 3/8	3/16	#8	#8	1.015	1 3/4	1 13/16	3 9/16	1 1/16	1 1/8	1 1/8-12
SAE-43508	3 1/2 x 8	29	3000	FULL PSI	20 1/4	1 1/2	3/16	#8	#8	1.015	1 3/4	1 13/16	5 3/8	1 1/8	1 1/4	1 1/2-12
SAE-43510	3 1/2 x 10	31	3000	FULL PSI	20 1/4	1 1/2	3/16	#8	#8	1.015	1 3/4	1 13/16	3 3/8	1 1/8	1 1/4	1 1/2-12
SAE-43512	3 1/2 x 12	33	3000	FULL PSI	22 1/4	1 1/2	3/16	#8	#8	1.015	1 3/4	1 13/16	3 3/8	1 1/8	1 1/4	1 1/2-12
SAE-43516	3 1/2 x 16	38	3000	24,200 LBS	31 1/2	1 1/2	3/16	#8	#8	1.015	1 3/4	1 13/16	8 3/8	1 1/8	1 1/4	1 1/2-12
SAE-43520	3 1/2 x 20	43	3000	24,700 LBS	30 1/4	1 1/2	3/16	#8	#8	1.015	1 3/4	1 13/16	3 3/8	1 1/8	1 1/4	1 1/2-12
SAE-43524	3 1/2 x 24	48	3000	18,250 LBS	34 1/4	1 1/2	3/16	#8	#8	1.015	1 3/4	1 13/16	3 3/8	1 1/8	1 1/4	1 1/2-12
SAE-44008	4 x 8	40	3000	FULL PSI	20 1/4	1 3/4	3/16	#8	#8	1.015	1 3/4	1 13/16	5 3/8	1 1/8	1 1/4	1 1/2-12
SAE-44010	4 x 10	43	3000	FULL PSI	20 1/4	1 3/4	3/16	#8	#8	1.015	1 3/4	1 13/16	3 3/8	1 1/8	1 1/4	1 1/2-12
SAE-44012	4 x 12	45	3000	FULL PSI	22 1/4	1 3/4	3/16	#8	#8	1.015	1 3/4	1 13/16	3 3/8	1 1/8	1 1/4	1 1/2-12
SAE-44016	4 x 16	54	3000	FULL PSI	31 1/2	1 3/4	3/16	#8	#8	1.015	1 3/4	1 13/16	8 3/8	1 1/8	1 1/4	1 1/2-12
SAE-44020	4 x 20	58	3000	FULL PSI	30 1/4	1 3/4	3/16	#8	#8	1.015	1 3/4	1 13/16	3 3/8	1 1/8	1 1/4	1 1/2-12
SAE-44024	4 x 24	60	3000	33,525 LBS	34 1/4	1 3/4	3/16	#8	#8	1.015	1 3/4	1 13/16	3 3/8	1 1/8	1 1/4	1 1/2-12
SAE-44030	4 x 30	65	3000	22,900 LBS	40 1/4	1 3/4	3/16	#8	#8	1.015	1 3/4	1 13/16	3 3/8	1 1/8	1 1/4	1 1/2-12

*Uses formed clevis & 3/4" pin.

THE "ROYAL" Welded-DA-Heavy Duty-Universal Mountings


FEATURES:

- Double Acting
- Honed tubing
- Welded construction
- Chromed, ground & polished rod
- Ductile iron piston & gland
- Crosstube end fittings with grease zerks
- Urethane u-cup and urethane wiper in gland
- O-ring with backup washers & cast iron ring piston seals
- Truarc snap ring gland retainer
- Standard color is black
- Rod seal is a urethane u-cup



Model No.	Style	Wt.	PSI	Column Load (Lbs)	Ret	Rod Dia.	A	PORTS NPTF	D	E	G	H	L1	L2	N	O
PMC-5408	2 1/2 X 8	17	2500	FULL PSI	16	1 3/8	3/16	3/8	.760	9/16	3/4	2 9/16	3	1 3/8	1 1/4	2 1/2
PMC-5412	2 1/2 X 12	20	2500	FULL PSI	20	1 3/8	3/16	3/8	.760	9/16	3/4	2 9/16	3	1 3/8	1 1/4	2 1/2
PMC-5414	2 1/2 X 14	22	2500	FULL PSI	22	1 3/8	3/16	3/8	.760	7/16	3/4	2 9/16	3	1 3/8	1 1/4	2 1/2
PMC-5416	2 1/2 X 16	23	2500	FULL PSI	24	1 3/8	3/16	3/8	.760	9/16	3/4	2 9/16	3	1 3/8	1 1/4	2 1/2
PMC-5420	2 1/2 X 20	27	2500	FULL PSI	28	1 3/8	3/16	3/8	.760	9/16	3/4	2 9/16	3	1 3/8	1 1/4	2 1/2
PMC-5424	2 1/2 X 24	30	2500	FULL PSI	32	1 3/8	3/16	3/8	.760	9/16	3/4	2 9/16	3	1 3/8	1 1/4	2 1/2
PMC-5430	2 1/2 X 30	35	2500	8,975 LBS	38	1 3/8	3/16	3/8	.760	9/16	3/4	2 9/16	3	1 3/8	1 1/4	2 1/2
PMC-5432	2 1/2 X 32	41	2500	8,000 LBS	40	1 3/8	3/16	3/8	.760	9/16	3/4	2 9/16	3	1 3/8	1 1/4	2 1/2
PMC-5436	2 1/2 X 36	44	2500	6,475 LBS	44	1 3/8	3/16	3/8	.760	9/16	3/4	2 9/16	3	1 3/8	1 1/4	2 1/2
PMC-5442	2 1/2 X 42	47	2500	4,870 LBS	50	1 3/8	3/16	3/8	.760	9/16	3/4	2 9/16	3	1 3/8	1 1/4	2 1/2
PMC-8308	3 X 8	22	2500	FULL PSI	16	1 1/2	3/16	1/2	1.015	11/16	1	2 5/16	3 1/2	1 1/2	1 1/4	2 5/8
PMC-8312	3 X 12	26	2500	FULL PSI	20	1 1/2	3/16	1/2	1.015	11/16	1	2 5/16	3 1/2	1 1/2	1 1/4	2 5/8
PMC-8314	3 X 14	29	2500	FULL PSI	22	1 1/2	3/16	1/2	1.015	11/16	1	2 5/16	3 1/2	1 1/2	1 1/4	2 5/8
PMC-8316	3 X 16	31	2500	FULL PSI	24	1 1/2	3/16	1/2	1.015	11/16	1	2 5/16	3 1/2	1 1/2	1 1/4	2 5/8
PMC-8320	3 X 20	35	2500	FULL PSI	28	1 1/2	3/16	1/2	1.015	11/16	1	2 5/16	3 1/2	1 1/2	1 1/4	2 5/8
PMC-8324	3 X 24	41	2500	FULL PSI	32	1 1/2	3/16	1/2	1.015	11/16	1	2 5/16	3 1/2	1 1/2	1 1/4	2 5/8
PMC-8330	3 X 30	46	2500	13,000 LBS	38	1 1/2	3/16	1/2	1.015	11/16	1	2 5/16	3 1/2	1 1/2	1 1/4	2 5/8
PMC-8332	3 X 32	48	2500	11,540 LBS	40	1 1/2	3/16	1/2	1.015	11/16	1	2 5/16	3 1/2	1 1/2	1 1/4	2 5/8
PMC-8336	3 X 36	52	2500	9,320 LBS	44	1 1/2	3/16	1/2	1.015	11/16	1	2 5/16	3 1/2	1 1/2	1 1/4	2 5/8
PMC-8340	3 X 40	56	2500	7,660 LBS	48	1 1/2	3/16	1/2	1.015	11/16	1	2 5/16	3 1/2	1 1/2	1 1/4	2 5/8
PMC-8342	3 X 42	59	2500	7,020 LBS	50	1 1/2	3/16	1/2	1.015	11/16	1	2 5/16	3 1/2	1 1/2	1 1/4	2 5/8
PMC-8348	3 X 48	65	2500	5,460 LBS	56	1 1/2	3/16	1/2	1.015	11/16	1	2 5/16	3 1/2	1 1/2	1 1/4	2 5/8
PMC-5508	3 1/2 X 8	26	2500	FULL PSI	16	1 1/2	3/16	1/2	1.015	11/16	1	1 11/16	4	1 1/2	1 1/2	2 5/8
PMC-5512	3 1/2 X 12	29	2500	FULL PSI	20	1 1/2	3/16	1/2	1.015	11/16	1	1 11/16	4	1 1/2	1 1/2	2 5/8
PMC-5514	3 1/2 X 14	32	2500	FULL PSI	22	1 1/2	3/16	1/2	1.015	11/16	1	1 11/16	4	1 1/2	1 1/2	2 5/8
PMC-5516	3 1/2 X 16	34	2500	FULL PSI	24	1 1/2	3/16	1/2	1.015	11/16	1	1 11/16	4	1 1/2	1 1/2	2 5/8
PMC-5520	3 1/2 X 20	38	2500	FULL PSI	28	1 1/2	3/16	1/2	1.015	11/16	1	1 11/16	4	1 1/2	1 1/2	2 5/8
PMC-5524	3 1/2 X 24	44	2500	20,210 LBS	32	1 1/2	3/16	1/2	1.015	11/16	1	1 11/16	4	1 1/2	1 1/2	2 5/8
PMC-5530	3 1/2 X 30	48	2500	13,540 LBS	38	1 1/2	3/16	1/2	1.015	11/16	1	1 11/16	4	1 1/2	1 1/2	2 5/8
PMC-5532	3 1/2 X 32	52	2500	12,040 LBS	40	1 1/2	3/16	1/2	1.015	11/16	1	1 11/16	4	1 1/2	1 1/2	2 5/8
PMC-5536	3 1/2 X 36	56	2500	9,700 LBS	44	1 1/2	3/16	1/2	1.015	11/16	1	1 11/16	4	1 1/2	1 1/2	2 5/8
PMC-5540	3 1/2 X 40	60	2500	7,975 LBS	48	1 1/2	3/16	1/2	1.015	11/16	1	1 11/16	4	1 1/2	1 1/2	2 5/8
PMC-5542	3 1/2 X 42	64	2500	7,300 LBS	50	1 1/2	3/16	1/2	1.015	11/16	1	1 11/16	4	1 1/2	1 1/2	2 5/8
PMC-5548	3 1/2 X 48	70	2500	5,680 LBS	56	1 1/2	3/16	1/2	1.015	11/16	1	1 11/16	4	1 1/2	1 1/2	2 5/8
PMC-5608	4 X 8	35	2500	FULL PSI	17	2	3/16	1/2	1.265	15/16	1 1/8	2 1/8	4 1/2	2	1 5/16	2 7/8
PMC-5612	4 X 12	41	2500	FULL PSI	21	2	3/16	1/2	1.265	15/16	1 1/8	2 1/8	4 1/2	2	1 5/16	2 7/8
PMC-5614	4 X 14	45	2500	FULL PSI	23	2	3/16	1/2	1.265	15/16	1 1/8	2 1/8	4 1/2	2	1 5/16	2 7/8
PMC-5616	4 X 16	48	2500	FULL PSI	25	2	3/16	1/2	1.265	15/16	1 1/8	2 1/8	4 1/2	2	1 5/16	2 7/8
PMC-5620	4 X 20	56	2500	FULL PSI	29	2	3/16	1/2	1.265	15/16	1 1/8	2 1/8	4 1/2	2	1 5/16	2 7/8
PMC-5624	4 X 24	62	2500	FULL PSI	33	2	3/16	1/2	1.265	15/16	1 1/8	2 1/8	4 1/2	2	1 5/16	2 7/8
PMC-5630	4 X 30	72	2500	FULL PSI	39	2	3/16	1/2	1.265	15/16	1 1/8	2 1/8	4 1/2	2	1 5/16	2 7/8
PMC-5632	4 X 32	74	2500	FULL PSI	41	2	3/16	1/2	1.265	15/16	1 1/8	2 1/8	4 1/2	2	1 5/16	2 7/8
PMC-5636	4 X 36	80	2500	28,710 LBS	45	2	3/16	1/2	1.265	15/16	1 1/8	2 1/8	4 1/2	2	1 5/16	2 7/8
PMC-5640	4 X 40	85	2500	23,700 LBS	49	2	3/16	1/2	1.265	15/16	1 1/8	2 1/8	4 1/2	2	1 5/16	2 7/8
PMC-5642	4 X 42	92	2500	21,680 LBS	51	2	3/16	1/2	1.265	15/16	1 1/8	2 1/8	4 1/2	2	1 5/16	2 7/8
PMC-5648	4 X 48	100	2500	16,930 LBS	57	2	3/16	1/2	1.265	15/16	1 1/8	2 1/8	4 1/2	2	1 5/16	2 7/8
PMC-5660	4 X 60	120	2500	11,160 LBS	69	2	3/16	1/2	1.265	15/16	1 1/8	2 1/8	4 1/2	2	1 5/16	2 7/8

NOTE: If disassembly is necessary - Be sure to put a wire or "O" Ring in snap ring groove so when the piston is pulled out - The cast iron ring will not catch in groove

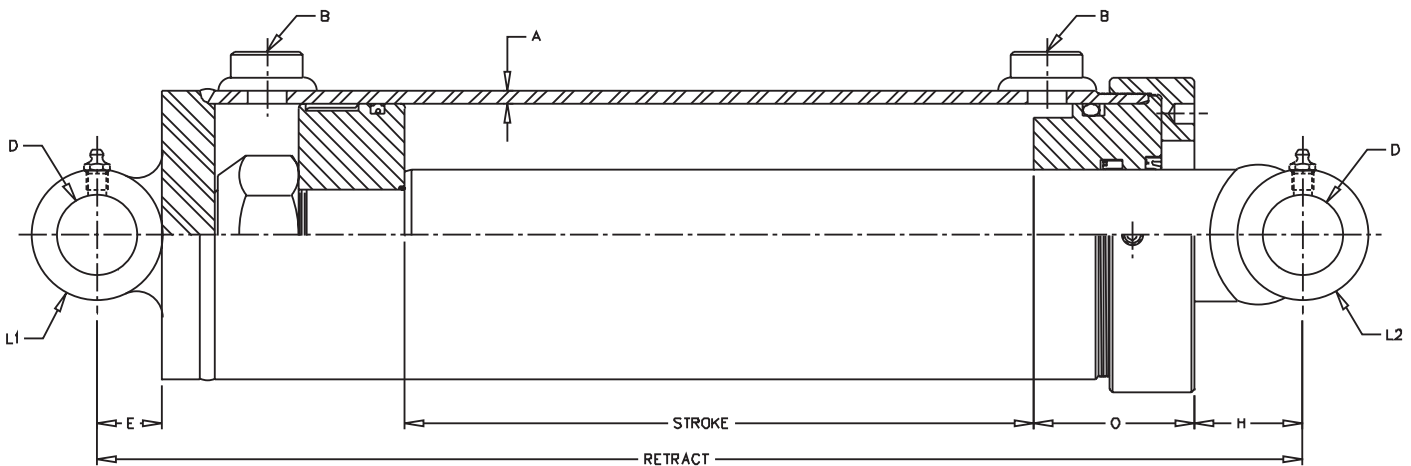
THE "GLADIATOR" Welded-DA-Heavy Duty-3000 PSI



FEATURES:

- Heavy duty welded construction
- Externally threaded gland cap
- Chromed, ground, and polished piston rod
- Skived tubing
- Ductile iron piston
- Urethane u-cup, metal encased wiper, polyurethane crown seal and wear ring
- Crosstube end fittings with grease zerks
- Standard color is black
- Matches closed length of Royal line cylinders (up to 42" stroke)

* Spacer included in these models



Rods are sized for a maximum safe push load (2:1 safety factor) given in the table. This is based on the pin configuration shown with no center support.

Model No.	Style	Wt.	PSI	Column Load (Lbs.)	Retract	Rod Dia.	A	B SAE	D	E	H	L1	O	L2
SAE-21008	5 x 8	75	3000	FULL PSI	19"	2 1/2	1/4	#12	1.515	1 1/4	2 1/16	5 3/4	3 1/8	4"
SAE-21012	5 x 12	85	3000	FULL PSI	23"	2 1/2	1/4	#12	1.515	1 1/4	2 1/16	5 3/4	3 1/8	4"
SAE-21016	5 x 16	90	3000	FULL PSI	27"	2 1/2	1/4	#12	1.515	1 1/4	2 1/16	5 3/4	3 1/8	4"
SAE-21020	5 x 20	105	3000	FULL PSI	31"	2 1/2	1/4	#12	1.515	1 1/4	2 1/16	5 3/4	3 1/8	4"
SAE-21024	5 x 24	115	3000	FULL PSI	35"	2 1/2	1/4	#12	1.515	1 1/4	2 1/16	5 3/4	3 1/8	4"
SAE-21030	5 x 30	130	3000	FULL PSI	41"	2 1/2	1/4	#12	1.515	1 1/4	2 1/16	5 3/4	3 1/8	4"
SAE-21036	5 x 36	145	3000	FULL PSI	47"	2 1/2	1/4	#12	1.515	1 1/4	2 1/16	5 3/4	3 1/8	4"
SAE-21048*	5 x 48	180	3000	39,125 LBS	61"	2 1/2	1/4	#12	1.515	1 1/4	2 1/16	5 3/4	3 1/8	4"
SAE-21054*	5 x 54	195	3000	31,150 LBS	68"	2 1/2	1/4	#12	1.515	1 1/4	2 1/16	5 3/4	3 1/8	4"
SAE-21060*	5 x 60	215	3000	25,360 LBS	75"	2 1/2	1/4	#12	1.515	1 1/4	2 1/16	5 3/4	3 1/8	4"
SAE-22008	6 x 8	100	3000	FULL PSI	19"	3	1/4	#12	1.515	1 1/4	2 1/16	6 3/4	3 1/16	4"
SAE-22012	6 x 12	110	3000	FULL PSI	23"	3	1/4	#12	1.515	1 1/4	2 1/16	6 3/4	3 1/16	4"
SAE-22016	6 x 16	125	3000	FULL PSI	27"	3	1/4	#12	1.515	1 1/4	2 1/16	6 3/4	3 1/16	4"
SAE-22024	6 x 24	150	3000	FULL PSI	35"	3	1/4	#12	1.515	1 1/4	2 1/16	6 3/4	3 1/16	4"
SAE-22030	6 x 30	170	3000	FULL PSI	41"	3	1/4	#12	1.515	1 1/4	2 1/16	6 3/4	3 1/16	4"
SAE-22036	6 x 36	190	3000	FULL PSI	47"	3	1/4	#12	1.515	1 1/4	2 1/16	6 3/4	3 1/16	4"
SAE-22048*	6 x 48	240	3000	79,700 LBS	61"	3	1/4	#12	1.515	1 1/4	2 1/16	6 3/4	3 1/16	4"
SAE-22054*	6 x 54	265	3000	63,400 LBS	68"	3	1/4	#12	1.515	1 1/4	2 1/16	6 3/4	3 1/16	4"
SAE-22060*	6 x 60	290	3000	51,700 LBS	75"	3	1/4	#12	1.515	1 1/4	2 1/16	6 3/4	3 1/16	4"



8 INCH BORE WELDED CYLINDER

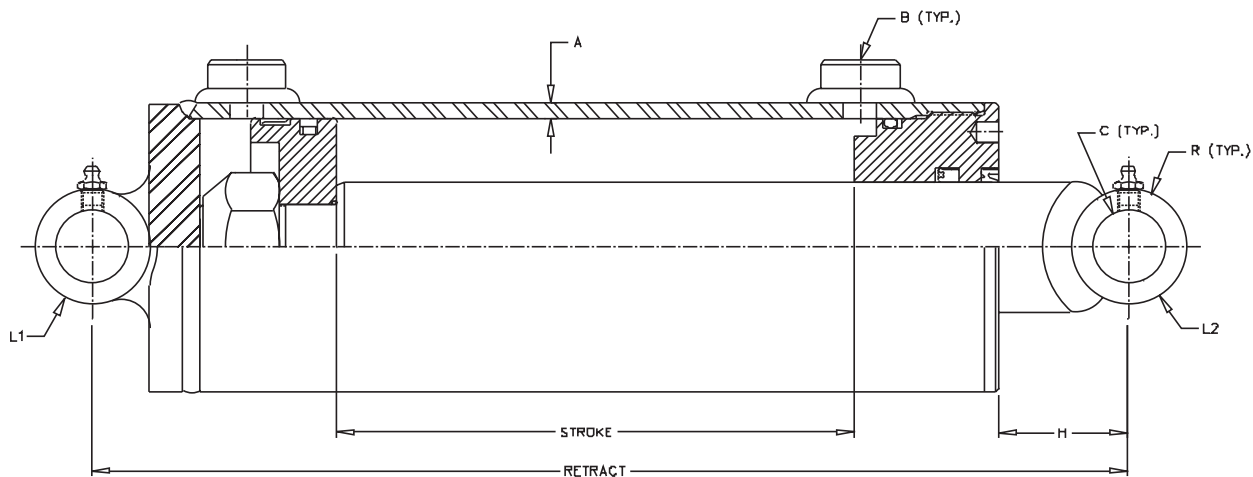
3000 PSI STANDARD DUTY

8 INCH BORE Welded-Double Acting-3000 PSI



FEATURES:

- Welded construction
- Chromed, ground, and polished piston rod
- Skived tubing
- Ductile iron piston & thread-in Ductile iron gland
- Teflon cap seal & wear ring on piston
- Urethane u-cup, metal encased wiper, & wear ring on piston rod
- Crosstube end fittings with grease zerks
- Painted: Gloss black
- 3000 PSI maximum operating pressure
- 3000 PSI maximum peak spike pressure



Rods are sized for a maximum safe push load (2:1 safety factor) given in the table. This is based on the pin configuration shown with no center support. Recommended pin material 100,000 PSI minimum yield strength

Model No.	Style	Wt	PSI	Column Load (Lbs)	Ret	Rod Dia.	A	B	C	R	H	L1	L2
SAE-68008	8 x 8	250	3000	Full PSI	24	4	.38	#16 SAE	2.515	4	3	9	5
SAE-68012	8 x 12	275	3000	Full PSI	28	4	.38	#16 SAE	2.515	4	3	9	5
SAE-68016	8 x 16	300	3000	Full PSI	32	4	.38	#16 SAE	2.515	4	3	9	5
SAE-68020	8 x 20	325	3000	Full PSI	36	4	.38	#16 SAE	2.515	4	3	9	5
SAE-68024	8 x 24	350	3000	Full PSI	40	4	.38	#16 SAE	2.515	4	3	9	5
SAE-68030	8 x 30	385	3000	Full PSI	46	4	.38	#16 SAE	2.515	4	3	9	5
SAE-68036	8 x 36	425	3000	Full PSI	52	4	.38	#16 SAE	2.515	4	3	9	5
SAE-68048*	8 x 48	500	3000	Full PSI	66	4	.38	#16 SAE	2.515	4	3	9	5
SAE-68054*	8 x 54	540	3000	Full PSI	73	4	.38	#16 SAE	2.515	4	3	9	5
SAE-68060*	8 x 60	580	3000	Full PSI	80	4	.38	#16 SAE	2.515	4	3	9	5

Application Note:

This Prince standard cylinder is designed for standard duty applications. It is not appropriate for applications that experience high shock loads, high spike pressures, high side loads, or have a high duty cycle. This product is not intended for use on personnel lift or crane applications. Consult your sales representative for cylinders designed to meet these applications.

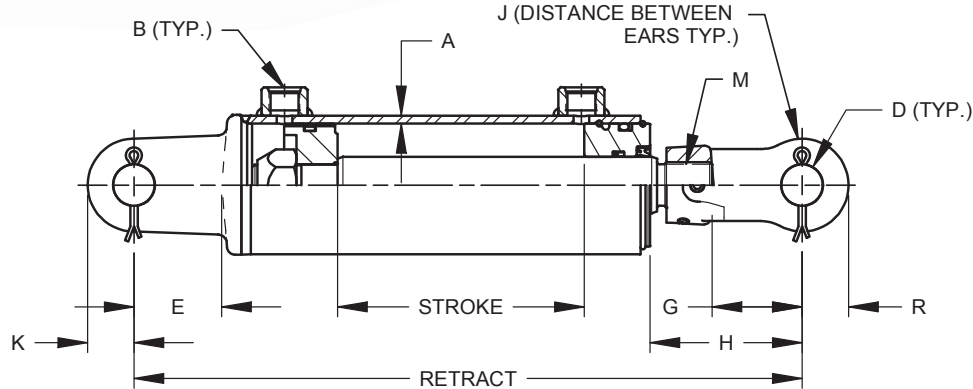
Note: * Spacers included in these models

THE "MAGNUM" Welded-DA-Heavy Duty-3000 PSI-Clevis



FEATURES:

- Clevis cylinders
- Heavy duty welded construction
- Unitized piston
- Chromed, ground, and polished piston rod
- Standard color is black
- Double Acting
- 3000 PSI maximum operating pressure
- Replaces The Sword Line



Rods are sized for a maximum safe push load (2:1 safety factor) given in the table. This is based on the pin configuration shown with no center support.

Model No.	Style	Wt.	PSI	Column Load (Lbs.)	Retract	Rod Dia	A	B	D	E	H	J	K	M	R
PC2008CL	2 X 8	15	3000	FULL PSI	18 1/4	1 1/8	3/16	#8 SAE	1	2 1/8	5 11/16	1 1/16	1	1 1/8-12	1 1/8
*PC2008CL-ASAE	2 X 8	15	3000	FULL PSI	20 1/4	1 1/8	3/16	#8 SAE	1	2 1/8	5 11/16	1 1/16	1	1 1/8-12	1 1/8
*PC2010CL	2 X 10	16	3000	FULL PSI	20 1/4	1 1/8	3/16	#8 SAE	1	2 1/8	3 11/16	1 1/16	1	1 1/8-12	1 1/8
*PC2016CL	2 X 16	21	3000	6,814	26 1/4	1 1/8	3/16	#8 SAE	1	2 1/8	8 15/16	1 1/16	1	1 1/8-12	1 1/8
*PC2016CL-ASAE	2 X 16	21	3000	6,814	31 1/2	1 1/8	3/16	#8 SAE	1	2 1/8	8 15/16	1 1/16	1	1 1/8-12	1 1/8
*PC2020CL	2 X 20	25	3000	6,924	30 1/4	1 1/8	3/16	#8 SAE	1	2 1/8	3 11/16	1 1/16	1	1 1/8-12	1 1/8
*PC2024CL	2 X 24	28	3000	5,169	34 1/4	1 1/8	3/16	#8 SAE	1	2 1/8	3 11/16	1 1/16	1	1 1/8-12	1 1/8
*PC2508CL	2 1/2 X 8	19	3000	FULL PSI	18 1/4	1 1/4	3/16	#8 SAE	1	2 1/8	5 11/16	1 1/16	1	1 1/8-12	1 1/8
*PC2508CL-ASAE	2 1/2 X 8	19	3000	FULL PSI	20 1/4	1 1/4	3/16	#8 SAE	1	2 1/8	5 11/16	1 1/16	1	1 1/8-12	1 1/8
*PC2510CL	2 1/2 X 10	20	3000	FULL PSI	20 1/4	1 1/4	3/16	#8 SAE	1	2 1/8	3 15/16	1 1/16	1	1 1/8-12	1 1/8
*PC2512CL	2 1/2 X 12	21	3000	FULL PSI	22 1/4	1 1/4	3/16	#8 SAE	1	2 1/8	3 15/16	1 1/16	1	1 1/8-12	1 1/8
*PC2516CL	2 1/2 X 16	26	3000	10,274	26 1/4	1 1/4	3/16	#8 SAE	1	2 1/8	9 1/4	1 1/16	1	1 1/8-12	1 1/8
*PC2516CL-ASAE	2 1/2 X 16	26	3000	10,274	31 1/2	1 1/4	3/16	#8 SAE	1	2 1/8	9 1/4	1 1/16	1	1 1/8-12	1 1/8
*PC2520CL	2 1/2 X 20	31	3000	10,456	30 1/4	1 1/4	3/16	#8 SAE	1	2 1/8	4	1 1/16	1	1 1/8-12	1 1/8
*PC2524CL	2 1/2 X 24	34	3000	7,825	34 1/4	1 1/4	3/16	#8 SAE	1	2 1/8	4	1 1/16	1	1 1/8-12	1 1/8
*PC3008CL	3 X 8	23	3000	FULL PSI	18 1/4	1 3/8	3/16	#8 SAE	1	2 1/8	5 11/16	1 1/16	1 1/8	1 1/8-12	1 1/8
*PC3008CL-ASAE	3 X 8	23	3000	FULL PSI	20 1/4	1 3/8	3/16	#8 SAE	1	2 1/8	5 11/16	1 1/16	1 1/8	1 1/8-12	1 1/8
*PC3010CL	3 X 10	24	3000	FULL PSI	20 1/4	1 3/8	3/16	#8 SAE	1	2 1/8	3 11/16	1 1/16	1 1/8	1 1/8-12	1 1/8
*PC3012CL	3 X 12	26	3000	FULL PSI	22 1/4	1 3/8	3/16	#8 SAE	1	2 1/8	3 11/16	1 1/16	1 1/8	1 1/8-12	1 1/8
PC3016CL	3 X 16	32	3000	15,358	26 1/4	1 3/8	3/16	#8 SAE	1	2 1/8	8 15/16	1 1/16	1 1/8	1 1/8-12	1 1/8
PC3016CL-ASAE	3 X 16	32	3000	15,358	31 1/2	1 3/8	3/16	#8 SAE	1	2 1/8	8 15/16	1 1/16	1 1/8	1 1/8-12	1 1/8
*PC3020CL	3 X 20	34	3000	15,666	30 1/4	1 3/8	3/16	#8 SAE	1	2 1/8	3 11/16	1 1/16	1 1/8	1 1/8-12	1 1/8
*PC3024CL	3 X 24	38	3000	11,695	34 1/4	1 3/8	3/16	#8 SAE	1	2 1/8	3 11/16	1 1/16	1 1/8	1 1/8-12	1 1/8
*PC3508CL	3 1/2 X 8	29	3000	FULL PSI	18 1/4	1 3/8	3/16	#8 SAE	1	2 1/8	5 11/16	1 1/16	1 1/4	1 5/16-12	1 1/4
*PC3508CL-ASAE	3 1/2 X 8	29	3000	FULL PSI	20 1/4	1 3/8	3/16	#8 SAE	1	2 1/8	5 11/16	1 1/16	1 1/4	1 5/16-12	1 1/4
*PC3510CL	3 1/2 X 10	30	3000	FULL PSI	20 1/4	1 3/8	3/16	#8 SAE	1	2 1/8	3 11/16	1 1/16	1 1/4	1 5/16-12	1 1/4
*PC3512CL	3 1/2 X 12	32	3000	FULL PSI	22 1/4	1 3/8	3/16	#8 SAE	1	2 1/8	3 11/16	1 1/16	1 1/4	1 5/16-12	1 1/4
PC3516CL	3 1/2 X 16	39	3000	15,525	26 1/4	1 3/8	3/16	#8 SAE	1	2 1/8	8 15/16	1 1/16	1 1/4	1 5/16-12	1 1/4
PC3516CL-ASAE	3 1/2 X 16	39	3000	15,525	31 1/2	1 3/8	3/16	#8 SAE	1	2 1/8	8 15/16	1 1/16	1 1/4	1 5/16-12	1 1/4
*PC3520CL	3 1/2 X 20	41	3000	15,892	30 1/4	1 3/8	3/16	#8 SAE	1	2 1/8	3 11/16	1 1/16	1 1/4	1 5/16-12	1 1/4
*PC3524CL	3 1/2 X 24	45	3000	11,860	34 1/4	1 3/8	3/16	#8 SAE	1	2 1/8	3 11/16	1 1/16	1 1/4	1 5/16-12	1 1/4
*PC4008CL	4 X 8	39	3000	FULL PSI	18 1/4	1 3/4	7/32	#10 SAE	1	2 1/8	5 11/16	1 1/16	1 1/4	1 1/2-12	1 1/4
*PC4008CL-ASAE	4 X 8	39	3000	FULL PSI	20 1/4	1 3/4	7/32	#10 SAE	1	2 1/8	5 11/16	1 1/16	1 1/4	1 1/2-12	1 1/4
*PC4010CL	4 X 10	40	3000	FULL PSI	20 1/4	1 3/4	7/32	#10 SAE	1	2 1/8	3 11/16	1 1/16	1 1/4	1 1/2-12	1 1/4
*PC4012CL	4 X 12	43	3000	FULL PSI	22 1/4	1 3/4	7/32	#10 SAE	1	2 1/8	3 11/16	1 1/16	1 1/4	1 1/2-12	1 1/4
PC4016CL	4 X 16	53	3000	FULL PSI	26 1/4	1 3/4	7/32	#10 SAE	1	2 1/8	8 15/16	1 1/16	1 1/4	1 1/2-12	1 1/4
PC4016CL-ASAE	4 X 16	53	3000	FULL PSI	31 1/2	1 3/4	7/32	#10 SAE	1	2 1/8	8 15/16	1 1/16	1 1/4	1 1/2-12	1 1/4
*PC4020CL	4 X 20	56	3000	FULL PSI	30 1/4	1 3/4	7/32	#10 SAE	1	2 1/8	3 11/16	1 1/16	1 1/4	1 1/2-12	1 1/4
*PC4024CL	4 X 24	62	3000	30,765	34 1/4	1 3/4	7/32	#10 SAE	1	2 1/8	3 11/16	1 1/16	1 1/4	1 1/2-12	1 1/4
*PC4030CL	4 X 30	71	3000	21,219	40 1/4	1 3/4	7/32	#10 SAE	1	2 1/8	3 11/16	1 1/16	1 1/4	1 1/2-12	1 1/4

* Stocked items



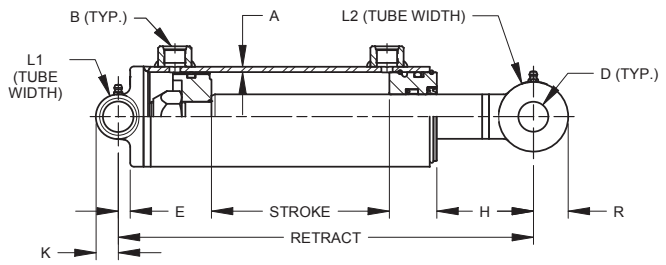
THE MAGNUM LINE

3000 PSI

THE "MAGNUM" Welded-DA-Heavy Duty-3000 PSI-Crosstube



- FEATURES:**
- Crosstube cylinders
 - Heavy duty welded construction
 - Unitized piston
 - Chromed, ground, and polished piston rod
 - Crosstube end fitting with grease zerks
 - Standard color is black
 - Double Acting
 - 3000 PSI maximum operating pressure



Rods are sized for a maximum safe push load (2:1 safety factor) given in the table. This is based on the pin configuration shown with no center support.

Model No.	Style	Wt.	PSI	Column Load (Lbs.)	Retract	Rod. Dia	A	B	D	E	H	K	L1	L2	R
PC2006XT	2 X 6	12	3000	FULL PSI	14	1 1/8	3/16	#8 SAE	1	-	3 5/16	1	2 3/8	1 1/2	3/4
PC2008XT	2 X 8	13	3000	FULL PSI	16	1 1/8	3/16	#8 SAE	1	-	3 5/16	1	2 3/8	1 1/2	3/4
PC2010XT	2 X 10	15	3000	FULL PSI	18	1 1/8	3/16	#8 SAE	1	-	3 5/16	1	2 3/8	1 1/2	3/4
PC2012XT	2 X 12	16	3000	FULL PSI	20	1 1/8	3/16	#8 SAE	1	-	3 5/16	1	2 3/8	1 1/2	3/4
PC2014XT	2 X 14	17	3000	FULL PSI	22	1 1/8	3/16	#8 SAE	1	-	3 5/16	1	2 3/8	1 1/2	3/4
PC2016XT	2 X 16	19	3000	FULL PSI	24	1 1/8	3/16	#8 SAE	1	-	3 5/16	1	2 3/8	1 1/2	3/4
PC2018XT	2 X 18	20	3000	8,939	26	1 1/8	3/16	#8 SAE	1	-	3 5/16	1	2 3/8	1 1/2	3/4
PC2020XT	2 X 20	21	3000	7,533	28	1 1/8	3/16	#8 SAE	1	-	3 5/16	1	2 3/8	1 1/2	3/4
PC2024XT	2 X 24	24	3000	5,559	32	1 1/8	3/16	#8 SAE	1	-	3 5/16	1	2 3/8	1 1/2	3/4
PC2030XT	2 X 30	28	3000	3,788	38	1 1/8	3/16	#8 SAE	1	-	3 5/16	1	2 3/8	1 1/2	3/4
*PC2506XT	2 1/2 X 6	14	3000	FULL PSI	14	1 3/8	3/16	#8 SAE	1	9/32	3 11/16	5/8	3	1 3/8	7/8
*PC2508XT	2 1/2 X 8	16	3000	FULL PSI	16	1 3/8	3/16	#8 SAE	1	9/32	3 11/16	5/8	3	1 3/8	7/8
*PC2510XT	2 1/2 X 10	17	3000	FULL PSI	18	1 3/8	3/16	#8 SAE	1	9/32	3 11/16	5/8	3	1 3/8	7/8
*PC2512XT	2 1/2 X 12	19	3000	FULL PSI	20	1 3/8	3/16	#8 SAE	1	9/32	3 11/16	5/8	3	1 3/8	7/8
*PC2514XT	2 1/2 X 14	20	3000	FULL PSI	22	1 3/8	3/16	#8 SAE	1	9/32	3 11/16	5/8	3	1 3/8	7/8
*PC2516XT	2 1/2 X 16	22	3000	FULL PSI	24	1 3/8	3/16	#8 SAE	1	9/32	3 11/16	5/8	3	1 3/8	7/8
*PC2518XT	2 1/2 X 18	24	3000	FULL PSI	26	1 3/8	3/16	#8 SAE	1	9/32	3 11/16	5/8	3	1 3/8	7/8
*PC2520XT	2 1/2 X 20	25	3000	FULL PSI	28	1 3/8	3/16	#8 SAE	1	9/32	3 11/16	5/8	3	1 3/8	7/8
*PC2524XT	2 1/2 X 24	28	3000	12,124	32	1 3/8	3/16	#8 SAE	1	9/32	3 11/16	5/8	3	1 3/8	7/8
*PC2530XT	2 1/2 X 30	33	3000	8,280	38	1 3/8	3/16	#8 SAE	1	9/32	3 11/16	5/8	3	1 3/8	7/8
*PC3006XT	3 X 6	19	3000	FULL PSI	14	1 1/2	3/16	#8 SAE	1	13/32	3 1/4	3/4	3 1/2	1 1/2	1 3/16
*PC3008XT	3 X 8	21	3000	FULL PSI	16	1 1/2	3/16	#8 SAE	1	13/32	3 1/4	3/4	3 1/2	1 1/2	1 3/16
*PC3010XT	3 X 10	22	3000	FULL PSI	18	1 1/2	3/16	#8 SAE	1	13/32	3 1/4	3/4	3 1/2	1 1/2	1 3/16
*PC3012XT	3 X 12	24	3000	FULL PSI	20	1 1/2	3/16	#8 SAE	1	13/32	3 1/4	3/4	3 1/2	1 1/2	1 3/16
*PC3014XT	3 X 14	26	3000	FULL PSI	22	1 1/2	3/16	#8 SAE	1	13/32	3 1/4	3/4	3 1/2	1 1/2	1 3/16
*PC3016XT	3 X 16	28	3000	FULL PSI	24	1 1/2	3/16	#8 SAE	1	13/32	3 1/4	3/4	3 1/2	1 1/2	1 3/16
*PC3018XT	3 X 18	30	3000	FULL PSI	26	1 1/2	3/16	#8 SAE	1	13/32	3 1/4	3/4	3 1/2	1 1/2	1 3/16
*PC3020XT	3 X 20	32	3000	FULL PSI	28	1 1/2	3/16	#8 SAE	1	13/32	3 1/4	3/4	3 1/2	1 1/2	1 3/16
*PC3024XT	3 X 24	36	3000	17,571	32	1 1/2	3/16	#8 SAE	1	13/32	3 1/4	3/4	3 1/2	1 1/2	1 3/16
*PC3030XT	3 X 30	42	3000	11,973	38	1 1/2	3/16	#8 SAE	1	13/32	3 1/4	3/4	3 1/2	1 1/2	1 3/16
*PC3032XT	3 X 32	43	3000	10,687	40	1 1/2	3/16	#8 SAE	1	13/32	3 1/4	3/4	3 1/2	1 1/2	1 3/16
*PC3036XT	3 X 36	47	3000	8,677	44	1 1/2	3/16	#8 SAE	1	13/32	3 1/4	3/4	3 1/2	1 1/2	1 3/16
*PC3040XT	3 X 40	51	3000	7,182	48	1 1/2	3/16	#8 SAE	1	13/32	3 1/4	3/4	3 1/2	1 1/2	1 3/16
*PC3048XT	3 X 48	61	3000	5,155	56	1 1/2	3/16	#8 SAE	1	13/32	3 1/4	3/4	3 1/2	1 1/2	1 3/16
*PC3506XT	3 1/2 X 6	22	3000	FULL PSI	14	1 3/4	3/16	#8 SAE	1	17/32	3 1/8	3/4	4	1 3/4	1 3/16
*PC3508XT	3 1/2 X 8	24	3000	FULL PSI	16	1 3/4	3/16	#8 SAE	1	17/32	3 1/8	3/4	4	1 3/4	1 3/16
*PC3510XT	3 1/2 X 10	26	3000	FULL PSI	18	1 3/4	3/16	#8 SAE	1	17/32	3 1/8	3/4	4	1 3/4	1 3/16
*PC3512XT	3 1/2 X 12	28	3000	FULL PSI	20	1 3/4	3/16	#8 SAE	1	17/32	3 1/8	3/4	4	1 3/4	1 3/16
*PC3514XT	3 1/2 X 14	30	3000	FULL PSI	22	1 3/4	3/16	#8 SAE	1	17/32	3 1/8	3/4	4	1 3/4	1 3/16
*PC3516XT	3 1/2 X 16	32	3000	FULL PSI	24	1 3/4	3/16	#8 SAE	1	17/32	3 1/8	3/4	4	1 3/4	1 3/16
*PC3518XT	3 1/2 X 18	35	3000	FULL PSI	26	1 3/4	3/16	#8 SAE	1	17/32	3 1/8	3/4	4	1 3/4	1 3/16
*PC3520XT	3 1/2 X 20	37	3000	FULL PSI	28	1 3/4	3/16	#8 SAE	1	17/32	3 1/8	3/4	4	1 3/4	1 3/16
*PC3524XT	3 1/2 X 24	41	3000	FULL PSI	32	1 3/4	3/16	#8 SAE	1	17/32	3 1/8	3/4	4	1 3/4	1 3/16
*PC3530XT	3 1/2 X 30	47	3000	22,050	38	1 3/4	3/16	#8 SAE	1	17/32	3 1/8	3/4	4	1 3/4	1 3/16
*PC3532XT	3 1/2 X 32	49	3000	19,693	40	1 3/4	3/16	#8 SAE	1	17/32	3 1/8	3/4	4	1 3/4	1 3/16
*PC3536XT	3 1/2 X 36	53	3000	15,980	44	1 3/4	3/16	#8 SAE	1	17/32	3 1/8	3/4	4	1 3/4	1 3/16
*PC3540XT	3 1/2 X 40	57	3000	13,221	48	1 3/4	3/16	#8 SAE	1	17/32	3 1/8	3/4	4	1 3/4	1 3/16
*PC3542XT	3 1/2 X 42	59	3000	12,103	50	1 3/4	3/16	#8 SAE	1	17/32	3 1/8	3/4	4	1 3/4	1 3/16
*PC3548XT	3 1/2 X 48	68	3000	9,485	56	1 3/4	3/16	#8 SAE	1	17/32	3 1/8	3/4	4	1 3/4	1 3/16
*PC4008XT	4 X 8	35	3000	FULL PSI	17	2	7/32	#10 SAE	1 1/4	25/32	3 7/8	1	4 1/2	2	1 5/16
*PC4012XT	4 X 12	41	3000	FULL PSI	21	2	7/32	#10 SAE	1 1/4	25/32	3 7/8	1	4 1/2	2	1 5/16
*PC4016XT	4 X 16	47	3000	FULL PSI	25	2	7/32	#10 SAE	1 1/4	25/32	3 7/8	1	4 1/2	2	1 5/16
*PC4020XT	4 X 20	53	3000	FULL PSI	29	2	7/32	#10 SAE	1 1/4	25/32	3 7/8	1	4 1/2	2	1 5/16
*PC4024XT	4 X 24	59	3000	FULL PSI	33	2	7/32	#10 SAE	1 1/4	25/32	3 7/8	1	4 1/2	2	1 5/16
*PC4030XT	4 X 30	68	3000	36,361	39	2	7/32	#10 SAE	1 1/4	25/32	3 7/8	1	4 1/2	2	1 5/16
*PC4032XT	4 X 32	71	3000	32,527	41	2	7/32	#10 SAE	1 1/4	25/32	3 7/8	1	4 1/2	2	1 5/16
*PC4036XT	4 X 36	77	3000	26,476	45	2	7/32	#10 SAE	1 1/4	25/32	3 7/8	1	4 1/2	2	1 5/16
*PC4040XT	4 X 40	83	3000	21,970	49	2	7/32	#10 SAE	1 1/4	25/32	3 7/8	1	4 1/2	2	1 5/16
*PC4042XT	4 X 42	86	3000	20,136	51	2	7/32	#10 SAE	1 1/4	25/32	3 7/8	1	4 1/2	2	1 5/16
*PC4048XT	4 X 48	100	3000	15,928	57	2	7/32	#10 SAE	1 1/4	25/32	3 7/8	1	4 1/2	2	1 5/16
*PC4060XT	4 X 60	123	3000	10,546	69	2	7/32	#10 SAE	1 1/4	25/32	3 7/8	1	4 1/2	2	1 5/16

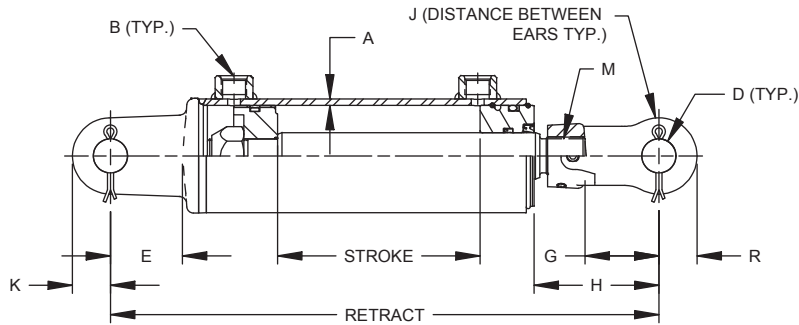
* Stocked items

MODEL	ROD DIAMETER OPTIONS					A	B (SAE)	PSI
PC20	1.125	-	-	-	-	3/16	#8	3000
PC25	*1.250	1.375	-	-	-	3/16	#8	3000
PC30	*1.375	1.500	1.750	-	-	3/16	#8	3000
PC35	*1.375	*1.500	1.750	2.000	-	3/16	#8	3000
PC40	1.750	2.000	2.250	2.500	-	7/32	#10	3000

For custom configuration contact Prince Manufacturing Corporation or use the Customer Portal at www.princehyd.com.

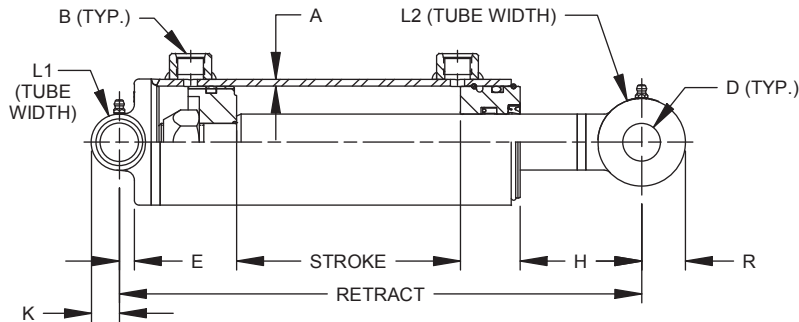
*ONLY AVAILABLE WITH ROD END CLEVIS

Model	Rod Dia.	CLEVIS BASE			CLEVIS ROD					
		D	E	K	D	G	H	J	M	R
PC20xxCL	1.125	1.015	2.12	1.00	1.015	2.15	3.67	1.06	1 1/8-12	1.13
PC25xxCL	1.250	1.015	2.14	1.00	1.015	2.15	3.97	1.06	1 1/8-12	1.13
PC30xxCL	1.375	1.015	2.13	1.13	1.015	2.15	3.70	1.06	1 1/8-12	1.13
PC35xxCL	1.375	1.015	2.13	1.25	1.015	2.18	3.70	1.06	1 5/16-12	1.25
PC40xxCL	1.750	1.015	2.13	1.25	1.015	2.19	3.65	1.06	1 1/2-12	1.25



Model	Rod Dia.	CROSSTUBE BASE				CROSSTUBE ROD					
		D	E	K	L1	D	H	L2 (XT)	R (XT)	L2 (XL)	R (XL)
PC20xxXT/XL	1.125	1.000	-	1.00	*2.38	1.015	3.29	1.125	0.75	-	-
PC25xxXT/XL	1.375	1.000	0.28	0.63	3.00	1.015	3.65	1.375	0.88	2.25	0.71
PC30xxXT/XL	1.500	1.030	0.40	0.75	3.50	1.015	3.26	1.500	1.17	2.75	0.91
PC35xxXT/XL	1.750	1.030	0.53	0.75	4.00	1.015	3.13	1.750	1.17	2.75	0.91
PC40xxXT/XL	2.000	1.265	0.78	1.00	4.50	1.265	3.83	2.000	1.29	3.25	1.13

*HOLE DRILLED THRU BASEPLATE





THE MAGNUM LINE

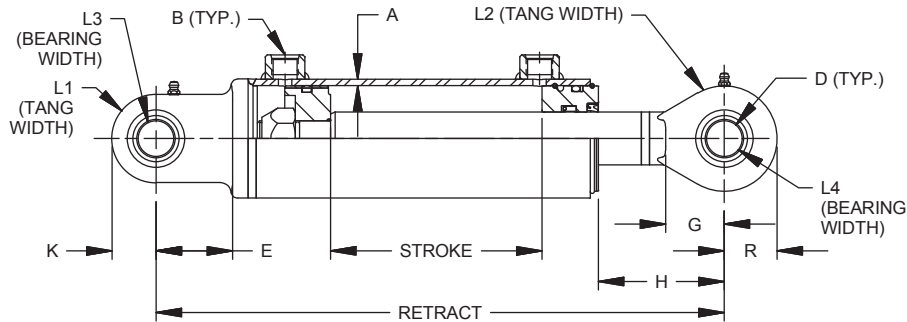
3000 PSI

MODEL	ROD DIAMETER OPTIONS					A	B (SAE)	PSI
PC20	1.125	-	-	-	-	3/16	#8	3000
PC25	*1.250	1.375	-	-	-	3/16	#8	3000
PC30	*1.375	1.500	1.750	-	-	3/16	#8	3000
PC35	*1.375	*1.500	1.750	2.000	-	3/16	#8	3000
PC40	1.750	2.000	2.250	2.500	-	7/32	#10	3000

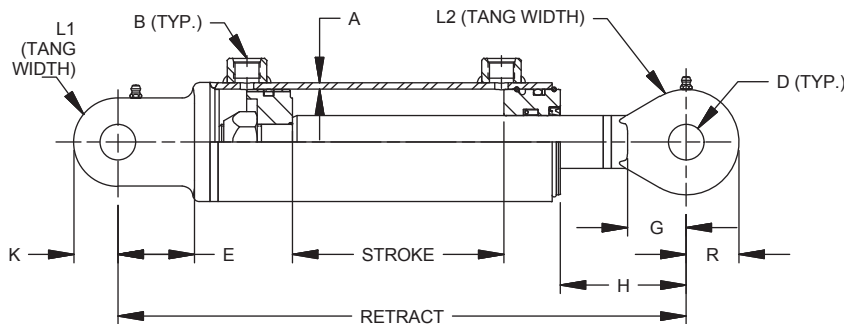
*ONLY AVAILABLE WITH ROD END CLEVIS

For custom configuration contact Prince Manufacturing Corporation or use the Customer Portal at www.princehyd.com.

Model	Rod Dia.	SPHERICAL BASE					SPHERICAL ROD					
		D	E	K	L1	L3	D	G	H	L2	L4	R
PC20xxSP	1.125	1.000	2.17	1.15	1.00	.875	1.000	1.34	3.54	1.00	.875	1.15
PC25xxSP	1.375	1.000	2.18	1.25	1.00	.875	1.000	1.47	3.90	1.00	.875	1.25
PC30xxSP	1.500	1.000	2.17	1.25	1.00	.875	1.000	1.67	3.57	1.00	.875	1.50
PC35xxSP	1.750	1.000	2.17	1.50	1.00	.875	1.000	1.67	3.57	1.00	.875	1.50
PC40xxSP	2.000	1.250	2.38	1.50	1.00	1.09	1.250	1.79	3.40	1.00	1.09	1.70



Model	Rod Dia.	TANG BASE				TANG ROD				
		D	E	K	L1	D	G	H	L2	R
PC20xxTG	1.125	1.015	2.17	1.15	1.00	1.015	1.34	3.54	1.00	1.15
PC25xxTG	1.375	1.015	2.18	1.25	1.00	1.015	1.47	3.90	1.00	1.25
PC30xxTG	1.500	1.015	2.17	1.25	1.00	1.015	1.67	3.57	1.00	1.50
PC35xxTG	1.750	1.015	2.17	1.50	1.00	1.015	1.67	3.57	1.00	1.50
PC40xxTG	2.000	1.265	2.38	1.50	1.00	1.265	1.79	3.40	1.00	1.70



3000 P.S.I. Rated Tie-Rod

3 / 7 Warranty

3 year warranty on standard products means you can confidently utilize equipment year after year. RoyalPlate Plus® rods are warranted against rust and corrosion for 7 years.

RoyalPlate Plus® Plating – A & B Versions

Prevents rust and corrosion more than twice as long as hard chrome plating and gas nitride treated steel bar.

Flexible Configurations

Cylinders are easily configured by available options such as port size and location, stroke length, pin size and paint color.

Exceptional Paint Performance

Aircraft quality two-part chemical cure polyester urethane paint will not fade and will outperform powder coating for the life of the cylinder.



Prince



Standard Tie-Rod Options

TIE-ROD MODEL CODE IDENTIFICATION MATRIX

MODEL CODE SYSTEM

B 350 160 ABAAA07B

MODELS:

B=B SERIES-3000 PSI w/ROYAL PLATE
 A=ASAE VERSION OF B SERIES
 w/ROYAL PLATE (8" & 16" Strokes
 only, 8" stroke not available
 in 4.5" & 5" bore size.)
 F=F SERIES - 3000 PSI
 E=ASAE VERSION OF F SERIES

BORE SIZE:

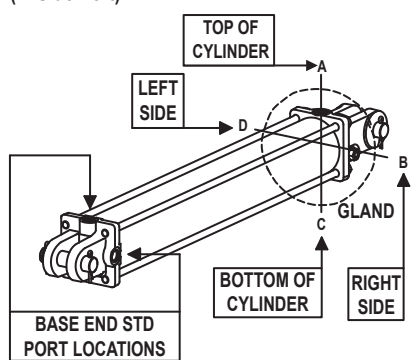
200=2.00" Bore 400=4.00" Bore
 250=2.50" Bore 450=4.50" Bore
 300=3.00" Bore 500=5.00" Bore
 350=3.50" Bore

STROKE: (Inches)

First two digits are in inches
 Third digit is 0-7 representing
 1/8's of an inch for custom strokes.
 Consult Prince for over 48"

GLAND PORT LOCATIONS: (See Pictorial Below)

A=(Top Port, STD)
 B=(R. Side Port)
 C=(Bottom Port)
 D=(L. Side Port)



PORT LOCATION DETERMINED FROM VIEWING
 CYLINDER FROM BASE END.

(See Table Below) **PORT STYLE & SIZE:**

CODE	PORT TYPE & SIZE	CYLINDER BORE SIZE (Inch)						
		2.00	2.50	3.00	3.50	4.00	4.50	5.00
A	#6 SAE ORB (9/16-18)	O	O	O	O	O	O	O
B	#8 SAE ORB (3/4-16)	S	S	S	S	S	O	O
C	#10 SAE ORB (7/8-14)						S	S
D	NPTF 3/8	O	O	O	O	O	O	O
E	NPTF 1/2	O	O	O	O	O	O	O
F	NPTF 3/4							O

Table Identifiers: (For Tables Above)

S-STANDARD O-OPTIONAL BLANK-NOT AVAILABLE

CARTON & DECAL CODE

A=No carton-Std decals, Installed
 B=Carton-Std decals, Installed (STD)
 C=No carton-Std decals, Loose
 D=Carton-Std decals, Loose
 E=No carton-Std decals, customer I.D. decal, Installed
 F=Carton-Std decals, customer I.D. decal, Installed
 G=No carton-Std decals, customer I.D. decal, Loose
 H=Carton-Std decals, customer I.D. decal, Loose
 J=No carton-Customer I.D. decal, Installed
 K=Carton-Customer I.D. decal, Installed
 L=No carton-Customer I.D. decal, Loose
 M=Carton-Customer I.D. decal, Loose
 N=No carton-Warning decals, Installed
 P=Carton-Warning decals, Installed
 Q=No carton-Warning decal, Loose
 R=Carton-Warning decals, Loose
 S=No carton-Warning, Customer I.D. decal, Installed
 T =Carton-Warning, Customer I.D. decal Installed
 U=No carton-Warning, Customer I.D. decal, Loose
 V=Carton-Warning, Customer I.D. decal, Loose

PAINT:

00=No Paint	14=Gloss White
01=Gloss Red	20=Red Primer
03=Highway Yellow	30=Black Primer
04=Canary Yellow	35=Naval Gray
05=Green	50=Yellow Primer
06=Blue	53=Gray Primer
07=Gloss Black (STD)	55=Silver Gray
	58=Gray

CLEVIS PIN INSTALLATION & RETAINER OPTIONS:

A=Cotter Pins & Clevis Pin(s) Shipped Loose (STD)
 B=Cotter Pins & Clevis Pin(s) Installed
 C=No Retainers, Clevis Pin(s) Shipped Loose if Selected

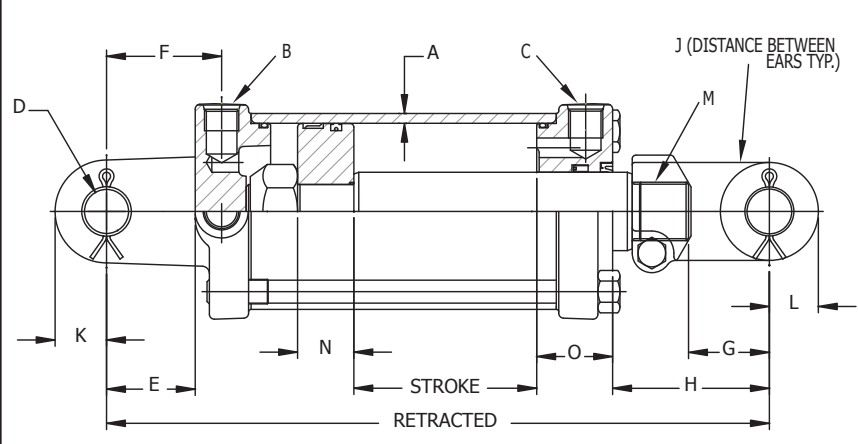
AVAILABLE CLEVIS PIN OPTIONS	CYLINDER BORE SIZE (Inch)						
	2.00	2.50	3.00	3.50	4.00	4.50	5.00
1.00"Ø PIN	S	S	S	S			
1.00"Ø HARDENED PIN	O	O	O	O	S		
1.25"Ø HARDENED PIN					O	S	S

CLEVIS PIN OPTIONS & AVAILABILITY: (See Table Above)

A=2-1.00"Ø Pins	E=1-1.00"Ø Pin
B=Reserved	F=Reserved
C=2-1.00"Ø Hardened Pins	G=1-1.00"Ø Hardened Pin
D=2-1.25"Ø Hardened Pins	H=1-1.25"Ø Hardened Pin
	J= No Pins

END FITTING OPTIONS: (See Table Above)

A=Ø1.00" Pin Holes, Both Ends
 B=Ø1.00" Base End Pin Hole, No Rod Clevis
 C=Ø1.00" Pin Holes, Both Ends, Stroke Control Assy *
 D=Ø1.25" Pin Holes, Both Ends
 E=Ø1.25" Base End Pin Hole, No Rod Clevis
 *(ASAE Version 2.0-3.5" Bore with 8" stroke only)



FEATURES:

- Honed tubing
- Heavy duty, high strength tie-rods
- Induction hardened piston rods plated with RoyalPlate Plus® (piston rods on 2" bore not hardened)
- Ductile iron piston, butt, gland & clevis
- Urethane u-cup & metal encased wiper 2 1/2" bore & larger models
- Crown seal on piston
- Pins & cotter pins (Hardened pins on 4", 4 1/2" & 5" models)
- Standard color is gloss black
- Stroke control may be installed on 8" strokes (2" - 3.5" bore, A models only)
- Side ports available on request
- Nylon bearing ring on 4", 4 1/2" & 5" bore models
- 3000 PSI continuous operating pressure

2 INCH BORE CYLINDERS

A & B Series Royal Plate Rod	E & F Series Chrome Rod	Stroke	Wt	Column Load (lbs)	Retract	Tare Dist. (H)	Standard Dimensions of 2 Inch Bore Cylinders
B200040ABAAA07B	F200040ABAAA07B	4"	17	9425 lbs	14 1/4	3 1/2	Note: 1 1/8" rod diameter Outside Sq. Dim. Butt - 2.875, Gland 2.875 A 3/16" cylinder tube wall thickness B, C SAE 3/4-16 extend & retract ports D 1.015" clevis pin hole size E, F 1 13/16" base clevis throat depth with 2 3/8" from pin center to port center G 1 13/16" rod clevis throat depth H 1.06" min. distance between ears at pin center line J 1 13/16" base clevis ear radius K 1 1/8" rod clevis ear radius L 1 1/8" rod clevis ear radius M 1 1/8" - 12 UNF-3 piston rod clevis thread size N 7/8" piston width O 2 3/16" gland width
B200060ABAAA07B	F200060ABAAA07B	6"	19	9425 lbs	16 1/4	3 1/2	
B200080ABAAA07B	F200080ABAAA07B	8"	20	9425 lbs	18 1/4	3 1/2	
A200080ABAAA07B	E200080ABAAA07B	8"	21	9425 lbs	20 1/4	ASAE 5 1/2	
B200100ABAAA07B	F200100ABAAA07B	10"	22	9425 lbs	20 1/4	3 1/2	
B200120ABAAA07B	F200120ABAAA07B	12"	23	9425 lbs	22 1/4	3 1/2	
B200140ABAAA07B	F200140ABAAA07B	14"	25	9425 lbs	24 1/4	3 1/2	
B200160ABAAA07B	F200160ABAAA07B	16"	28	9425 lbs	26 1/4	3 1/2	
A200160ABAAA07B	E200160ABAAA07B	16"	28	7630 lbs	31 1/2	ASAE 8 3/4	
B200180ABAAA07B	F200180ABAAA07B	18"	28	9200 lbs	28 1/4	3 1/2	
B200200ABAAA07B	F200200ABAAA07B	20"	30	7760 lbs	30 1/4	3 1/2	
B200240ABAAA07B	F200240ABAAA07B	24"	33	5730 lbs	34 1/4	3 1/2	
B200300ABAAA07B	F200300ABAAA07B	30"	37	3910 lbs	40 1/4	3 1/2	

Seal Kits: Seal Kit for A, B, E, F & SAE-320XX Cylinder Models = PMCK-B200000
 Universal Seal Kit for SAE-90XX, SAE-320XXX, A, B, E & F Cylinder Models = 240040022

2.5 INCH BORE CYLINDERS

A & B Series Royal Plate Rod	E & F Series Chrome Rod	Stroke	Wt	Column Load (lbs)	Retract	Tare Dist. (H)	Standard Dimensions of 2.5 Inch Bore Cylinders
B250060ABAAA07B	F250060ABAAA07B	6"	22	14730 lbs	16 1/4	3 5/16	Note: 1 1/4" rod diameter Outside Sq. Dim. Butt - 3.375, Gland 3.375 A 3/16" cylinder tube wall thickness B, C SAE 3/4-16 extend & retract ports D 1.015" clevis pin hole size E, F 1 1/8" base clevis throat depth with 2 13/16" from pin center to port center G 1 13/16" rod clevis throat depth H 1.06" min. distance between ears at pin center line J 1.015" base clevis ear radius K 1 1/8" rod clevis ear radius L 1 1/8" rod clevis ear radius M 1 1/8" - 12 UNF-3 piston rod clevis thread size N 1" piston width O 2 3/8" gland width
B250080ABAAA07B	F250080ABAAA07B	8"	25	14730 lbs	18 1/4	3 5/16	
A250080ABAAA07B	E250080ABAAA07B	8"	25	14730 lbs	20 1/4	ASAE 5 5/16	
B250100ABAAA07B	F250100ABAAA07B	10"	26	14730 lbs	20 1/4	3 5/16	
B250120ABAAA07B	F250120ABAAA07B	12"	28	14730 lbs	22 1/4	3 5/16	
B250140ABAAA07B	F250140ABAAA07B	14"	30	14730 lbs	24 1/4	3 5/16	
B250160ABAAA07B	F250160ABAAA07B	16"	25	14730 lbs	26 1/4	3 5/16	
A250160ABAAA07B	E250160ABAAA07B	16"	34	11520 lbs	31 1/2	ASAE 8 9/16	
B250180ABAAA07B	F250180ABAAA07B	18"	34	13880 lbs	28 1/4	3 5/16	
B250200ABAAA07B	F250200ABAAA07B	20"	36	11720 lbs	30 1/4	3 5/16	
B250240ABAAA07B	F250240ABAAA07B	24"	41	8670 lbs	34 1/4	3 5/16	
B250300ABAAA07B	F250300ABAAA07B	30"	47	5930 lbs	40 1/4	3 5/16	

Seal Kits: Seal Kit for A, B, E, F & SAE-325XX Cylinder Models = PMCK-B250000
 Universal Seal Kit for SAE-91XX, SAE-325XXX, A, B, E & F Cylinder Models = 240040023

3 INCH BORE CYLINDERS

A & B Series Royal Plate Rod	E & F Series Chrome Rod	Stroke	Wt	Column Load (lbs)	Retract	Tare Dist. (H)	Standard Dimensions of 3 Inch Bore Cylinders
B300060ABAAA07B	F300060ABAAA07B	6"	26	21210 lbs	16 1/4	3 3/4	Note: 1 3/8" rod diameter Outside Sq. Dim. Butt - 3.875, Gland 3.875 A 3/16" cylinder tube wall thickness B, C SAE 3/4-16 extend & retract ports D 1.015" clevis pin hole size E, F 1 7/8" base clevis throat depth with 2 7/16" from pin center to port center G 1 13/16" rod clevis throat depth H 1.06" min. distance between ears at pin center line J 1 1/8" base clevis ear radius K 1 1/8" rod clevis ear radius L 1 1/8" rod clevis ear radius M 1 1/8" - 12 UNF-3 piston rod clevis thread size N 1" piston width O 1 15/16" gland width
B300080ABAAA07B	F300080ABAAA07B	8"	29	21210 lbs	18 1/4	3 3/4	
A300080ABAAA07B	E300080ABAAA07B	8"	29	21210 lbs	20 1/4	ASAE 5 3/4	
B300100ABAAA07B	F300100ABAAA07B	10"	30	21210 lbs	20 1/4	3 3/4	
B300120ABAAA07B	F300120ABAAA07B	12"	33	21210 lbs	22 1/4	3 3/4	
B300140ABAAA07B	F300140ABAAA07B	14"	35	21210 lbs	24 1/4	3 3/4	
B300160ABAAA07B	F300160ABAAA07B	16"	29	21210 lbs	26 1/4	3 3/4	
A300160ABAAA07B	E300160ABAAA07B	16"	40	16730 lbs	31 1/2	ASAE 9	
B300180ABAAA07B	F300180ABAAA07B	18"	40	20120 lbs	28 1/4	3 3/4	
B300200ABAAA07B	F300200ABAAA07B	20"	42	17010 lbs	30 1/4	3 3/4	
B300240ABAAA07B	F300240ABAAA07B	24"	47	12620 lbs	34 1/4	3 3/4	
B300300ABAAA07B	F300300ABAAA07B	30"	54	8640 lbs	40 1/4	3 3/4	
B300360ABAAA07B	F300360ABAAA07B	36"	61	6290 lbs	46 1/4	3 3/4	
B300480ABAAA07B	F300480ABAAA07B	48"	75	3760 lbs	58 1/4	3 7/8	

Seal Kits: Seal Kit for A, B, E, F & SAE-330XX Cylinder Models = PMCK-B300000
 Universal Seal Kit for SAE-92XX, SAE-330XXX, A, B, E & F Cylinder Models = 240040024

3.5 INCH BORE CYLINDERS

A & B Series Royal Plate Rod	E & F Series Chrome Rod	Stroke	Wt	Column Load (lbs)	Retract	Tare Dist. (H)	Standard Dimensions of 3.5 Inch Bore Cylinders
A350080ABAAA07B	E350080ABAAA07B	8"	35	28860 lbs	20 ¼	ASAE 5 ¾	Note: 1 ¾" rod diameter Outside Sq. Dim. Butt - 4.313, Gland 4.313 A ¾" cylinder tube wall thickness B, C SAE ¾ -16 extend & retract ports D 1.015" clevis pin hole size E, F 1 7/8" base clevis throat depth with 2 7/16" from pin center to port center G 1 13/16" rod clevis throat depth J 1.06" min. distance between ears at pin center line K 1 ¼" base clevis ear radius L 1 ¼" rod clevis ear radius M 1 5/16" - 12 UNF-3 piston rod clevis thread size N 1" piston width O 1 15/16" gland width
B350080ABAAA07B	F350080ABAAA07B	8"	35	28860 lbs	18 ¼	3 ¾	
B350100ABAAA07B	F350100ABAAA07B	10"	37	28860 lbs	20 ¼	3 ¾	
B350120ABAAA07B	F350120ABAAA07B	12"	39	28860 lbs	22 ¼	3 ¾	
B350140ABAAA07B	F350140ABAAA07B	14"	42	28860 lbs	24 ¼	3 ¾	
A350160ABAAA07B	E350160ABAAA07B	16"	46	16900 lbs	31 ½	ASAE 9	
B350160ABAAA07B	F350160ABAAA07B	16"	35	25000 lbs	26 ¼	3 ¾	
B350180ABAAA07B	F350180ABAAA07B	18"	47	20400 lbs	28 ¼	3 ¾	
B350200ABAAA07B	F350200ABAAA07B	20"	49	17240 lbs	30 ¼	3 ¾	
B350240ABAAA07B	F350240ABAAA07B	24"	54	12780 lbs	34 ¼	3 ¾	
B350300ABAAA07B	F350300ABAAA07B	30"	62	8760 lbs	40 ¼	3 ¾	
B350360ABAAA07B	F350360ABAAA07B	36"	69	6370 lbs	46 ¼	3 ¾	
B350480ABAAA07B	F350480ABAAA07B	48"	85	3800 lbs	58 ¼	3 ¾	

Seal Kits: Seal Kit for A, B, E, F & SAE-335XX Cylinder Models = PMCK-B350000
 Universal Seal Kit for SAE-93XX, SAE-335XXX, A, B, E & F Cylinder Models = 240040025

4 INCH BORE CYLINDERS

A & B Series Royal Plate Rod	E & F Series Chrome Rod	Stroke	Wt	Column Load (lbs)	Retract	Tare Dist. (H)	Standard Dimensions of 4 Inch Bore Cylinders
A400080ABACA07B	E400080ABACA07B	8"	48	37700 lbs	20 ¼	ASAE 5 ¼	Note: 1 ¾" rod diameter Outside Sq. Dim. Butt - 5.063, Gland 5.063 A ¾" cylinder tube wall thickness B, C SAE ¾ -16 extend & retract ports D 1.015" clevis pin hole size E, F 1 ¾" base clevis throat depth with 2 7/16" from pin center to port center G 1 7/8" rod clevis throat depth J 1.06" min. distance between ears at pin center line K 1 ¼" base clevis ear radius L 1 ¼" rod clevis ear radius M 1 1/2" - 12 UNF-3 piston rod clevis thread size N 1 ¼" piston width O 1 13/16" gland width
B400080ABACA07B	F400080ABACA07B	8"	48	37700 lbs	18 ¼	3 ¼	
B400100ABACA07B	F400100ABACA07B	10"	50	37700 lbs	20 ¼	3 ¼	
B400120ABACA07B	F400120ABACA07B	12"	54	37700 lbs	22 ¼	3 ¼	
B400140ABACA07B	F400140ABACA07B	14"	57	37700 lbs	24 ¼	3 ¼	
A400160ABACA07B	E400160ABACA07B	16"	64	37700 lbs	31 ½	ASAE 8 ½	
B400160ABACA07B	F400160ABACA07B	16"	48	37700 lbs	26 ¼	3 ¼	
B400180ABACA07B	F400180ABACA07B	18"	64	37700 lbs	28 ¼	3 ¼	
B400200ABACA07B	F400200ABACA07B	20"	68	37700 lbs	30 ¼	3 ¼	
B400240ABACA07B	F400240ABACA07B	24"	75	33710 lbs	34 ¼	3 ¼	
B400300ABACA07B	F400300ABACA07B	30"	85	22990 lbs	40 ¼	3 ¼	
B400360ABACA07B	F400360ABACA07B	36"	95	16680 lbs	46 ¼	3 ¼	
B400480ABACA07B	F400480ABACA07B	48"	116	9920 lbs	58 ¼	3 ¼	

Seal Kits: Seal Kit for A, B, E, F & SAE-340XX Cylinder Models = PMCK-B400000
 Universal Seal Kit for SAE-94XX, SAE-340XXX, A, B, E & F Cylinder Models = 240040026

4.5 INCH BORE CYLINDERS

A & B Series Royal Plate Rod	E & F Series Chrome Rod	Stroke	Wt	Column Load (lbs)	Retract	Tare Dist. (H)	Standard Dimensions of 4.5 Inch Bore Cylinders
B450080ACDDA07B	F450080ACDDA07B	8"	60	47710 lbs	20 ¼	4	Note: 2" rod diameter Outside Sq. Dim. Butt - 5.5, Gland 5.5 A ¼" cylinder tube wall thickness B, C SAE 7/8 -14 extend & retract ports D 1.265" clevis pin hole size E, F 2 1/2" base clevis throat depth with 2 5/16" from pin center to port center G 2" rod clevis throat depth J 1.13" min. distance between ears at pin center line K 1 5/16" base clevis ear radius L 1 ¼" rod clevis ear radius M 1 1/2" - 12 UNF-3 piston rod clevis thread size N 1 7/16" piston width O 1 15/16" gland width
B450120ACDDA07B	F450120ACDDA07B	12"	69	47710 lbs	24 ¼	4	
B450140ACDDA07B	F450140ACDDA07B	14"	74	47710 lbs	26 ¼	4	
B450160ACDDA07B	F450160ACDDA07B	16"	60	47710 lbs	28 ¼	4	
A450160ACDDA07B	E450160ACDDA07B	16"	81	47710 lbs	31 ½	ASAE 7 ¼	
B450180ACDDA07B	F450180ACDDA07B	18"	83	47710 lbs	30 ¼	4	
B450200ACDDA07B	F450200ACDDA07B	20"	87	47710 lbs	32 ¼	4	
B450240ACDDA07B	F450240ACDDA07B	24"	97	44710 lbs	36 ¼	4	
B450300ACDDA07B	F450300ACDDA07B	30"	110	37530 lbs	42 ¼	4	
B450360ACDDA07B	F450360ACDDA07B	36"	124	27430 lbs	48 ¼	4	
B450480ACDDA07B	F450480ACDDA07B	48"	152	16470 lbs	60 ¼	4	

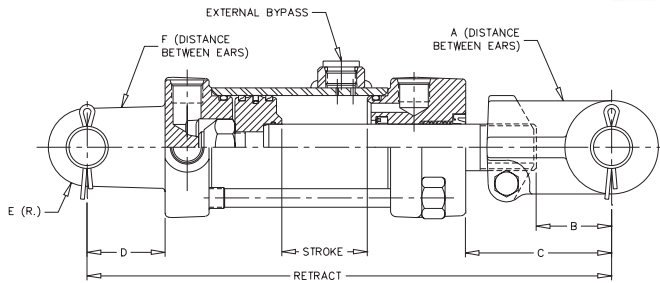
Seal Kits: Seal Kit for A, B, E, F & SAE-345XX Cylinder Models = PMCK-B450000
 No Universal Seal Kit offered

5 INCH BORE CYLINDERS

A & B Series Royal Plate Rod	E & F Series Chrome Rod	Stroke	Wt	Column Load (lbs)	Retract	Tare Dist. (H)	Standard Dimensions of 5 Inch Bore Cylinders
B500080ACDDA07B	F500080ACDDA07B	8"	72	58900 lbs	20 ¼	4	Note: 2" rod diameter Outside Sq. Dim. Butt - 5.875, Gland 5.875 A ¼" cylinder tube wall thickness B, C SAE 7/8 -14 extend & retract ports D 1.265" clevis pin hole size E, F 1 ¾" base clevis throat depth with 2 5/8" from pin center to port center G 2" rod clevis throat depth J 1.13" min. distance between ears at pin center line K 1 3/8" base clevis ear radius L 1 ¼" rod clevis ear radius M 1 1/2" - 12 UNF-3 piston rod clevis thread size N 1 7/16" piston width O 2 1/2" gland width
B500120ACDDA07B	F500120ACDDA07B	12"	83	58900 lbs	24 ¼	4	
B500140ACDDA07B	F500140ACDDA07B	14"	88	58900 lbs	26 ¼	4	
A500160ACDDA07B	E500160ACDDA07B	16"	96	58900 lbs	31 ½	ASAE 7 ¼	
B500160ACDDA07B	F500160ACDDA07B	16"	96	58900 lbs	28 ¼	4	
B500180ACDDA07B	F500180ACDDA07B	18"	98	58900 lbs	30 ¼	4	
B500200ACDDA07B	F500200ACDDA07B	20"	103	58900 lbs	32 ¼	4	
B500240ACDDA07B	F500240ACDDA07B	24"	113	54510 lbs	36 ¼	4	
B500300ACDDA07B	F500300ACDDA07B	30"	129	37620 lbs	42 ¼	4	
B500360ACDDA07B	F500360ACDDA07B	36"	144	27520 lbs	48 ¼	4	
B500480ACDDA07B	F500480ACDDA07B	48"	175	16550 lbs	60 ¼	4	

Seal Kits: Seal Kit for A, B, E, F & SAE-350XX Cylinder Models = PMCK-B500000
 Universal Seal Kit for SAE-95XX, SAE-350XXX, A, B, E & F Cylinder Models = 240040027

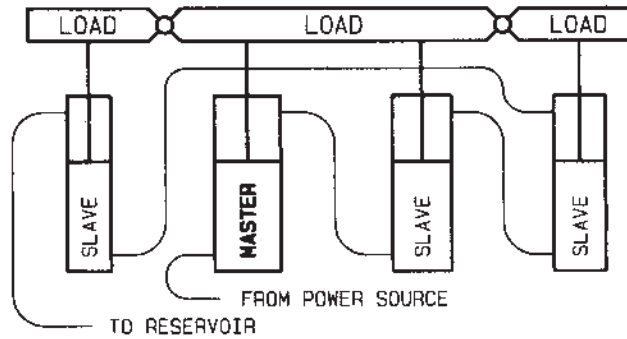
TIE ROD CONSTRUCTION - EXTERNAL STYLE BYPASS



FEATURES:

- Heavy duty tie-rod construction
- Induction hardened piston rods plated with RoyalPlate Plus®
- "DU" bushing
- #8 S.A.E.(3/4-16 ORB) ports
- For use with 1" pins
- Pins, clips & cotters included
- ORB to pipe adaptors are included
- Standard color is black
- Same high quality features found in all Prince Tie-rod Cylinders with the addition of an external bypass (rephase)

TO RAISE LOADS EQUALLY



NOTES:

- Master cylinder provides power for the entire system
- Each cylinder in series has less pressure in proportion to the load on it
- Designed for use in a series cylinder circuit at a maximum of 3000 PSI, cylinder not to be used at 3000 PSI in push or pull as a single cylinder
- Stroke control assemblies may be installed on 8" stroke models
- Can be used with remote stroke control valve PM-SC-10
- Can be used with holding valves HC-V-AA21 and HC-V-AA22
- Master cylinder equipped with series/rephase and stroke control are available. Contact Prince Sales Department.
- Custom designs in welded or tie-rod style for larger or smaller bore sizes
- Exact matched sets available
- Contact Prince Engineering Department for special applications

Bore	Rod Dia.	8" Stroke 20 1/4" Retract	10" Stroke 22 1/4" Retract	12" Stroke 24 1/4" Retract	16" Stroke 28 1/4" Retract	A	B	C	D	E	F
2 1/2	1 1/8	PMS-AM-2586	PMS-AM-2629	PMS-AM-2588	PMS-AM-2590	1 1/16	1 13/16	5 9/32	1 7/8	15/16	1 1/16
2 3/4	1 1/8	PMS-AM-2580	PMS-AM-2627	PMS-AM-2582	PMS-AM-2584	1 1/16	1 13/16	5 23/32	1 7/8	15/16	1 1/16
3	1 1/4	PMS-AM-2574	PMS-AM-2625	PMS-AM-2576	PMS-AM-2578	1 1/16	1 13/16	5 27/32	1 7/8	15/16	1 1/16
3 1/4	1 1/4	PMS-AM-2568	PMS-AM-2623	PMS-AM-2570	PMS-AM-2572	1 1/16	1 13/16	5 27/32	1 7/8	1 1/4	1 1/16
3 1/2	1 1/4	PMS-AM-2562	PMS-AM-2621	PMS-AM-2564	PMS-AM-2566	1 1/16	1 13/16	5 27/32	1 7/8	1 1/4	1 1/16
3 3/4	1 3/8	PMS-AM-2556A	PMS-AM-2619A	PMS-AM-2558A	PMS-AM-2560A	1 1/8	1 7/8	5 11/32	1 3/4	1 1/4	1 1/16
4	1 3/8	PMS-AM-2550A	PMS-AM-2617A	PMS-AM-2552A	PMS-AM-2554A	1 1/8	1 7/8	5 11/32	1 3/4	1 1/4	1 1/16
4 1/2	2	PMS-AM-2544	PMS-AM-2615	PMS-AM-2546	PMS-AM-2548	1 1/8	1 7/8	4 1/32	1 3/4	1 1/4	1 1/8
4 3/4	1 1/2	PMS-AM-2538	PMS-AM-2613	PMS-AM-2540	PMS-AM-2542	1 1/8	1 13/16	4 1/32	1 3/4	1 1/4	1 1/8
5	1 1/2	PMS-AM-2532	PMS-AM-2611	PMS-AM-2534	PMS-AM-2536	1 1/8	1 13/16	4 1/32	1 3/4	1 1/4	1 1/8



THE MAJESTIC LINE

2500 PSI TIE-ROD DOUBLE ACTING

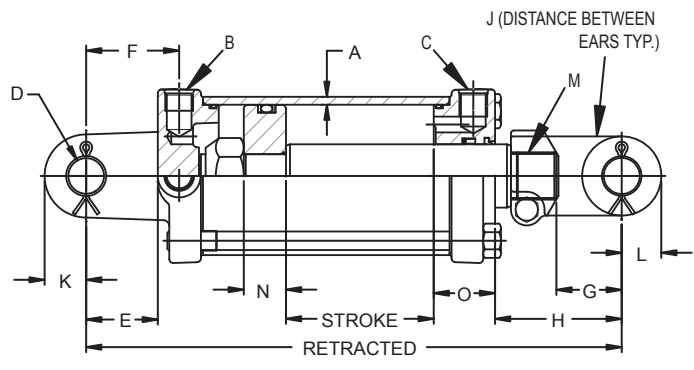
THE "MAJESTIC LINE" Tie-Rod-DA-Medium Duty Rods



FEATURES:

- Honed tubing
- Chromed, ground & polished piston rod will operate at full pressure through 16" stroke
- Ductile iron piston, butt, gland & clevis
- Urethane u-cup & urethane wiper in gland
- Pins, clips & cotters included
- Standard color is red
- Stroke control may be installed on 8" strokes
- Side ports available on request at no additional cost

CYLINDER DIMENSIONAL FEATURES: For dimensional data of configured cylinders, please refer to the Standard Dimensions column of the standard cylinder tables on page C12-C13. For outside cylinder dimensions and clevis widths for both A & B models, see table below.



Bore Size	Outside Sq. Dim		Clevis Width	
	Butt	Gland	Butt	Rod
2"	2.875"	2.875"	2.375"	2.500"
2.5"	3.375"	3.375"	2.344"	2.500"
3"	3.875"	3.875"	2.375"	2.500"
3.5"	4.313"	4.313"	2.625"	2.875"
4"	5.063"	5.063"	2.750"	2.875"
4.5"	5.500"	5.500"	2.938"	2.875"
5"	5.875"	5.875"	2.938"	2.875"

Rods are sized for a maximum safe push load (2:1 safety factor) given in the table. This is based on the pin configuration shown with no center support.

Model No.	Style	Wt.	PSI	Column Load (Lbs.)	Re-tract	Rod Dia.	A SAE	B SAE	C SAE	D	E	F	G	H	J	K	L	M	N	O
SAE-8404	2 x 4	18	2500	FULL PSI	14 1/4	1	1/8	3/4-16	3/4-16	1.015	1 13/16	2 3/8	1 13/16	3 1/2	1.06	15/16	1 1/8	1-14	7/8	2 1/4
SAE-8406	2 x 6	19	2500	FULL PSI	16 1/4	1	1/8	3/4-16	3/4-16	1.015	1 13/16	2 3/8	1 13/16	3 1/2	1.06	15/16	1 1/8	1-14	7/8	2 1/4
SAE-8408	2 x 8	20	2500	FULL PSI	20 1/4	1	1/8	3/4-16	3/4-16	1.015	1 13/16	2 3/8	1 13/16	5 1/2	1.06	15/16	1 1/8	1-14	7/8	2 1/4
SAE-8410	2 x 10	21	2500	FULL PSI	20 1/4	1	1/8	3/4-16	3/4-16	1.015	1 13/16	2 3/8	1 13/16	3 1/2	1.06	15/16	1 1/8	1-14	7/8	2 1/4
SAE-7006	2 1/2 x 6	22	2500	FULL PSI	16 1/4	1 1/8	1/8	3/4-16	3/4-16	1.015	1 7/8	2 13/32	1 13/16	3 1/2	1.06	15/16	1 1/8	1 1/8-12	1	2 3/8
SAE-7008	2 1/2 x 8	23	2500	FULL PSI	20 1/4	1 1/8	1/8	3/4-16	3/4-16	1.015	1 7/8	2 13/32	1 13/16	5 1/2	1.06	15/16	1 1/8	1 1/8-12	1	2 3/8
SAE-7106	3 x 6	24	2500	FULL PSI	16 1/4	1 1/8	3/16	3/4-16	3/4-16	1.015	1 7/8	2 7/16	1 13/16	3 3/4	1.06	15/16	1 1/8	1 1/8-12	1	1 15/16
SAE-7108	3 x 8	26	2500	FULL PSI	20 1/4	1 1/8	3/16	3/4-16	3/4-16	1.015	1 7/8	2 7/16	1 13/16	5 3/4	1.06	15/16	1 1/8	1 1/8-12	1	1 15/16
SAE-7208A	3 1/2 x 8	31	2500	FULL PSI	20 1/4	1 1/8	3/16	3/4-16	3/4-16	1.015	1 7/8	2 7/16	1 13/16	5 7/8	1.06	1 1/4	1 1/4	1 1/8-12	1	1 13/16
SAE-8608	4 x 8	42	2500	FULL PSI	20 1/4	1 1/2	3/16	3/4-16	3/4-16	1.015	1 3/4	2 7/16	1 7/8	5 1/4	1.06	1 1/4	1 1/4	1 1/2-12	1	1 13/16
SAE-8610	4 x 10	45	2500	FULL PSI	20 1/4	1 1/2	3/16	3/4-16	3/4-16	1.015	1 3/4	2 7/16	1 7/8	3 1/4	1.06	1 1/4	1 1/4	1 1/2-12	1	1 13/16
SAE-8208	5 x 8	64	2500	FULL PSI	20 1/4	1 3/4	1/4	7/8-14	7/8-14	1.265	1 3/4	2 5/8	2	4	1.06	1 1/4	1 1/4	1 1/2-12	1	2 1/2
SAE-8210	5 x 10	67	2500	FULL PSI	22 1/4	1 3/4	1/4	7/8-14	7/8-14	1.265	1 3/4	2 5/8	2	4	1.06	1 1/4	1 1/4	1 1/2-12	1	2 1/2

3000 PSI Tie-Rod-DA-With 2" Rod

Model No.	Style	Wt.	PSI	Column Load (Lbs.)	Re-tract	Rod Dia.	A	B SAE	C SAE	D	E	F	G	H	J	K, L	M	N	O
C400080ABDDA03B	4 x 8	50	3000PSI	Full PSI	20 1/4	2	3/16	3/4 - 16	3/4 - 16	1.265	1 3/4	2 7/16	1.875	5 1/4	1.06	1 1/4	1 1/2-12	1.25	1 13/16
C400160ABDDA03B	4 x 16	68	3000PSI	Full PSI	31 1/2	2	3/16	3/4 - 16	3/4 - 16	1.265	1 3/4	2 7/16	1.875	8 1/2	1.06	1 1/4	1 1/2-12	1.25	1 13/16
C400240ABDDA03B	4 x 24	81	3000PSI	Full PSI	36 1/4	2	3/16	3/4 - 16	3/4 - 16	1.265	1 3/4	2 7/16	1.875	5 1/4	1.06	1 1/4	1 1/2-12	1.25	1 13/16
C400260ABDDA03B	4 x 26	84	3000PSI	Full PSI	38 1/4	2	3/16	3/4 - 16	3/4 - 16	1.265	1 3/4	2 7/16	1.875	5 1/4	1.06	1 1/4	1 1/2-12	1.25	1 13/16

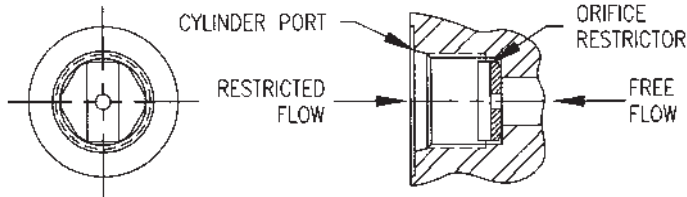
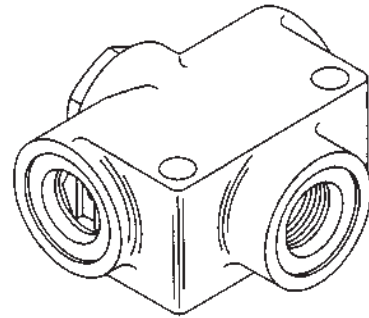
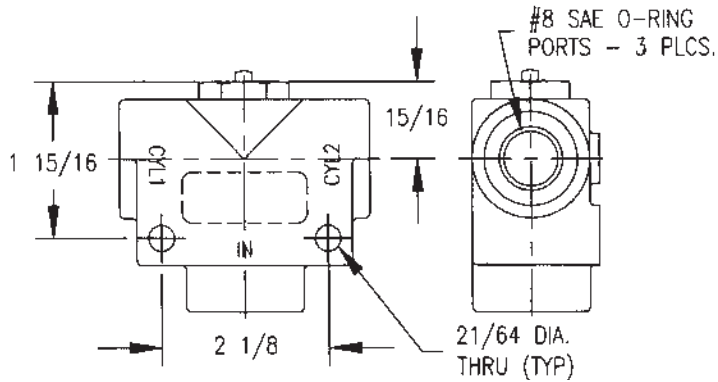
ALSO AVAILABLE FROM STOCK

A complete line of Hydraulic Directional Control Valves, Gear Pumps, Motors as well as Custom Designed Products to fit your needs.



REMOTE STROKE CONTROL VALVE

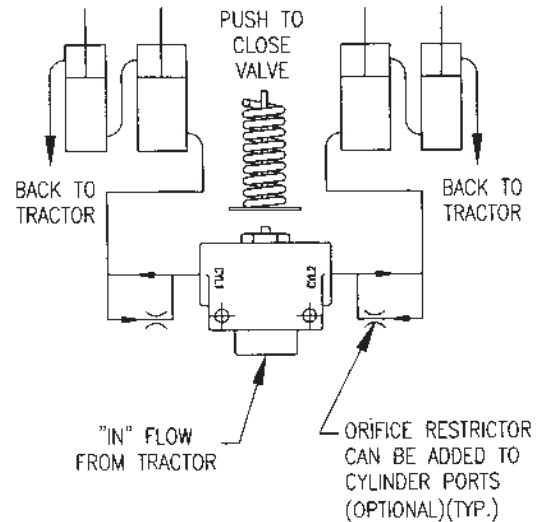
MODEL PM-SC-10 (with optional orifice restrictor)



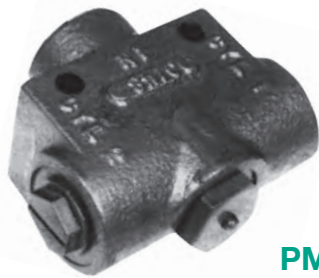
ORIFICE RESTRICTORS AVAILABLE FOR CYLINDER PORTS (OPTIONAL):

- 670805062 .062 ORIFICE
- 670805125 .125 ORIFICE
- 670805000 NO ORIFICE (CUSTOMER DRILL)

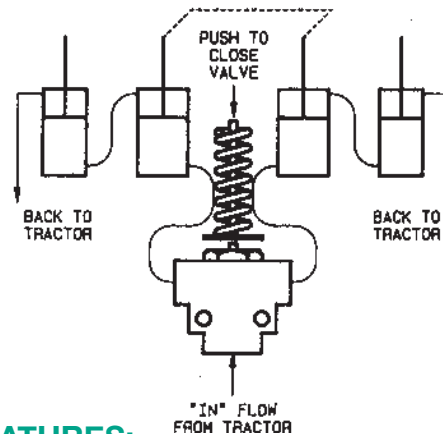
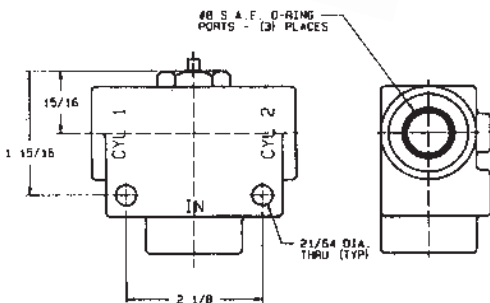
IF ANOTHER SIZE ORIFICE IS REQUIRED, PLEASE LET US KNOW.



REMOTE STROKE CONTROL VALVE



MODEL PM-SC-10



FEATURES:

- (1) piece cast iron body
- Unitized stroke control valve cartridge
- Valve stem treated for corrosion resistance
- Valve closes to prevent return flow to tractor



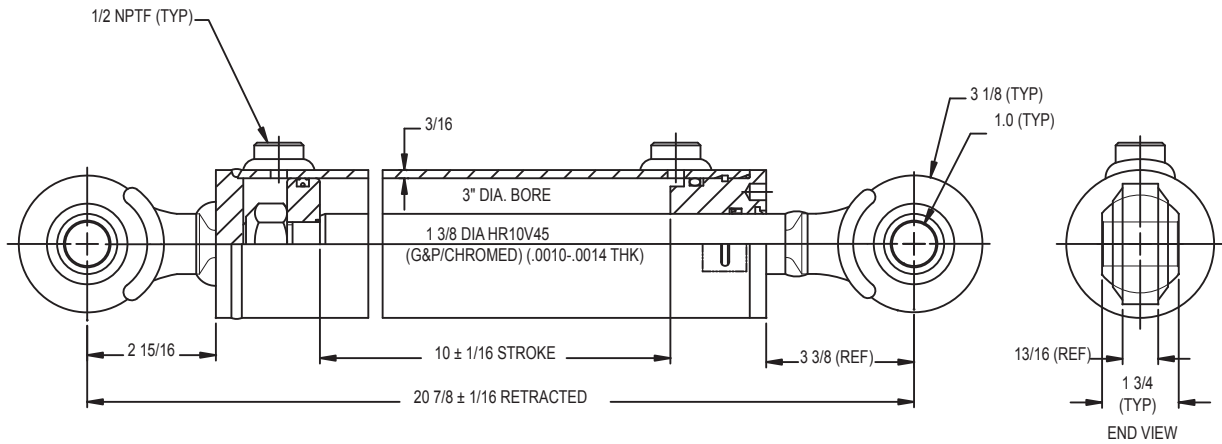
TOP LINK CYLINDER

Model Number BD-0228 - Category II



FEATURES:

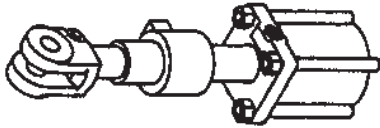
- 3000 PSI Working Pressure
- 3" Bore x 10" Stroke
- Double Acting
- 1/2" NPTF Ports
- 1 3/8" Hard Chrome Plated Rod
- 20 7/8" Closed Length (Pin Center to Pin Center)
- Swivel End Fittings At Both Ends For 1" Diameter Pins





OTHER PRINCE ACCESSORIES

STROKE CONTROL ASSEMBLY



All components plated (including the base casting) to retard rust.

THREE-SLEEVE STROKE CONTROL ASSEMBLY



Practical, efficient and easily adapted to Prince Standard Series Cylinders. Positive stroke control adjustment
Open 5 5/8" Closed 2 1/2"

MODEL: PM-SC-1—Adapting Sleeve Thread size 1"-14 and will accept shaft size thru 1 1/8" Dia. Wt. 3 lbs. Will fit models: SAE-8408.

MODEL: PM-SC-8—Adapting Sleeve Thread size 1 1/8"-12 and will accept shaft size thru 1 3/8" Dia. Wt. 3 lbs. Will fit models: SAE-7008, SAE-7108, SAE-7208A, PMC-42008, PMC-42508, PMC-43008, A200080, A250080, A300080.

MODEL: PM-SC-11—Adapting Sleeve Thread size 1 5/16"-12. Will fit models: A350080.

TWO-SLEEVE STROKE CONTROL ASSEMBLY



Open 3 1/2" Closed 2 5/16"

MODEL: PM-SC-3—Adapting Sleeve Thread size 1 1/2"-12.; PM-SC-12—Adapting Sleeve Thread size 1 5/16"-12 and will accept 1 1/2" shaft size. Wt. 3 lbs. Will fit model SAE-8608, PMC-43508.

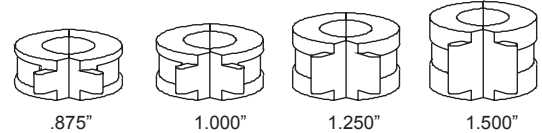
REMOTE HYDRAULIC STROKE CONTROL

A remote hydraulic stroke control is available. This stroke control makes use of the same reliable cartridge used in the internal stroke control cylinder. But it can be mounted remotely to control 2 cylinders. (See pg. C15)

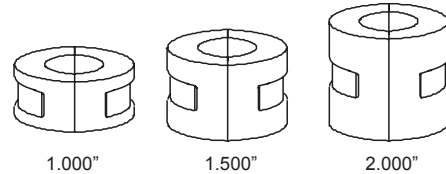


Collars are made of die cast aluminum in split halves. Flat steel springs are easy to open and snap onto the cylinder rod.

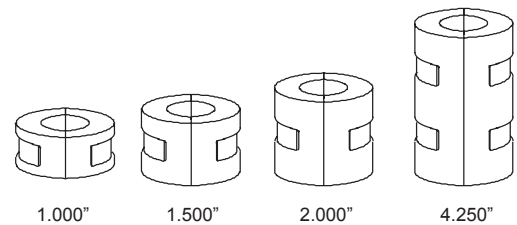
- Light Weight
- Durable
- Non-Abrasive



PM-SLCS-10: For 1.125 THRU 1.500 DIA RODS (THIS SET HAS FINGER TABS, WITH RELIEF NOTCHES)



PM-SLCS-14: For 1.750 THRU 2.000 DIA RODS (THIS SET HAS NO FINGER TABS)



PM-SLCS-15: For 1.750 THRU 2.000 DIA RODS (THIS SET HAS NO FINGER TABS)

RESTRICTORS



Full-flow in one direction, with restriction of flow on return. Simple design permits complete reversible mounting for restricting either output or return. Interchangeable discs of various sizes for different flow metering can be quickly changed in the field. Use with pumps up to 12 GPM. 5,000 psi. 1/2" NPTF, inlet and outlet.

MODEL	SIZE	WT.
PM-R-10	BLANK	3 oz.
PM-R-12	1/16"	3 oz.
PM-R-13	3/32"	3 oz.
PM-R-14	1/8"	3 oz.
PM-R-15	5/32"	3 oz.
PM-R-16	3/16"	3 oz.
PM-R-17	7/32"	3 oz.
PM-R-18	1/4"	3 oz.
PM-R-19	.041"	3 oz.
PM-R-20	1/64"	3 oz.
PM-R-21	.031"	3 oz.
PM-R-22	.078"	3 oz.



OTHER PRINCE ACCESSORIES

BREATHER FILTERS



MODEL	NPT	WT.
PM-BHF-1	1/2"	8 oz.
PM-BHF-2	3/8"	8 oz.

Primarily for use on a double acting unit being used as single action. Filters dirt out of cylinder end displacing air. Used often on oil reservoirs, or any part of hydraulic circuit where air is displaced. Filter material can be removed easily and cleaned for re-use. 1/2" or 3/8" NPT.

1" DIA. CLEVIS PINS



Part #190400005 (PSP-1376) 1" x 2 1/8" Between Retainer grooves which use #220001504 Cotter Pins
 Part #190400001 (PSP-1377) 1" x 2 3/4" Between Retainer grooves which use #220001504 Cotter Pins
 Part #190400004 1" x 3 1/4" Between Retainer grooves which use #220001504 Cotter Pins

BRONZE BREATHERS



LOW-PROFILE BRONZE BREATHERS

1/8 NPTF - 270003001 - PM-BHF-7
1/4 NPTF - 270003015 - PM-BHF-8
3/8 NPTF - 270003019 - PM-BHF-9
1/2 NPTF - 270003016 - PM-BHF-10
3/4 NPTF - 270003017 - PM-BHF-11

1" DIA. SWAGED WASHER ONE END CLEVIS PINS WITH HOLE



Part #190400012 1" x 2-1/8" Between Retainers with 13/64" hole drilled in one end to use #220001504 Cotter Pins
 Part #190400013 1" x 2-3/4" Between Retainer with 13/64" hole drilled in one end to use #220001504 Cotter Pins
 Part #220001504 Cotter Pin for above.

SMALL BREATHERS



MODEL	THREAD SIZE	WT.
PM-BHF-3	1/2" NPT	3 oz.
PM-BHF-4	3/8" NPT	3 oz.
PM-BHF-5	7/8" ORB. (with "O" Ring)	3 oz.
PM-BHF-6	3/4" ORB. (with "O" Ring)	3 oz.

Plug-type breather/filter for converting double action unit to single action. Aluminum body contains two fine filter screens retained by star washer. A low-cost, non-reusable, "throw-away" unit.



1 1/4" DIA. CLEVIS PINS



Part #190600016 1 1/4" x 3-3/16" Between Retainers with 13/64" hole drilled in BOTH ends to use #220001504 Cotter Pins shown above.

HARDENED PIN HOLE BUSHING



MODEL	SIZE
210400140	1 1/4 OD x 1" ID x 7/8" Long
210400084	1 1/4 OD x 1" ID x 1" Long

Now you can easily install a bushing in a 1 1/4" hole (such as the pin hole size on the PMC-8200) and reduce the size to accommodate a 1" pin.

SPECIFICATIONS

Material: High carbon spring steel hardened, tempered and oiled; hardness: Rockwell C 45-50.

1" DIA. HARDENED PINS



Part #190400035 1" x 3 1/4" Between Retainer grooves which use #220001504 Cotter Pins

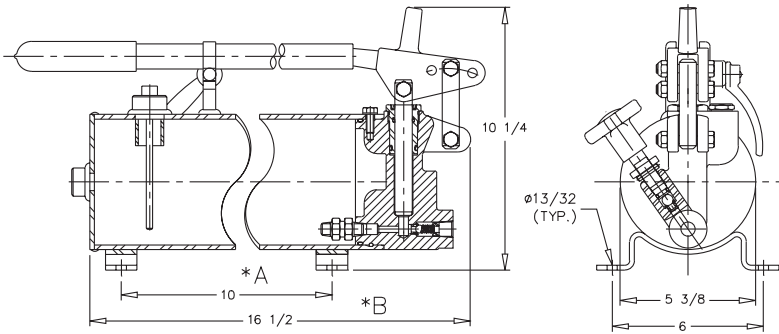
1 1/4" DIA. HARDENED PINS



Part #190600024 1 1/4" x 3 3/16" Between Retainer grooves which use #220001504 Cotter Pins
 Part #190600025 1 1/4" x 3" Between Retainer grooves which use #220001504 Cotter Pins



PRINCE HAND PUMP



MODEL	WT.	RESERVOIR SIZE
PM-HP-15B	35 lbs.	1 1/2 Gallon
PM-HP-10B	30 lbs.	1 Gallon
PM-HP-5B	27 lbs.	1/2 Gallon

Used for 1000-3000 PSI

	A	B
PM-HP-15B	16 9/16	22 5/8
PM-HP-10B	10	16 1/2
PM-HP-5B	3 7/16	9 15/16



FEATURES

The Prince Hand Pump offers definite advantages over similar components of higher cost. The pump has unique design features which insure versatility. The handle can be used in (2) positions. The pump can be mounted vertically and horizontally. There are (3) different volume and pressure settings.

Position 1: 1.25 cu. in. per stroke—1500 psi*

Position 2: .95 cu. in. per stroke—2000 psi*

Position 3: .60 cu. in. per stroke—3000 psi*

*At applied force of 60-65 lbs. on handle. (Pressure to 6,000 psi can be developed with more force)

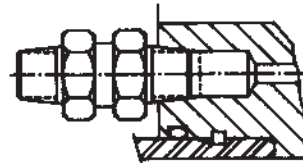
APPLICATIONS

This hand pump is designed for use wherever hydraulic pressure is needed without large flow requirements. Its sturdy design and positive sealing features will provide excellent service with a minimum of care. Uses range from mobile equipment to shop presses. Recommended temperatures may range from -40°F to 300°F. Most general purpose hydraulic oils can be used.

HYDRAULIC CYLINDER APPLICATIONS

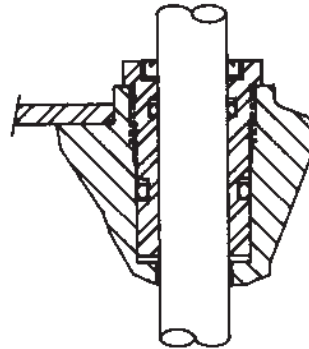
This pump is designed for use with single acting cylinders. It may be used with double acting cylinders provided a two-way hand valve is used to direct the flow and a return port is installed on the reservoir.

FEATURES



REPLACEABLE INLET CHECK VALVE

Zero leakage check valve assembly can be easily replaced when necessary.



REMOVABLE PACKING GLAND

Packing gland seals can be easily replaced when necessary. Gland is removable with standard tools. New seals are readily available.

SPECIFICATIONS

PISTON	11/16" dia. Chromed & Ground Steel
PRESSURE SEALS ...	O-ring & Hytrel Back-up Washers
HANDLE	Extra—heavy Pipe, 14 3/4" long
HANDLE POSITION.....	Selective — two-position
PORT SIZE	3/8 NPTF
RESERVOIR	Steel Tubing
MOUNTING FIXTURES	4-Bolt Foot Mount for 3/8 Bolts
MOUNTING	Horizontal or vertical
FLOAT CHECK.....	Prevent oil from sloshing out
DIPSTICK	To check oil level
HANDLE CARRIER.....	To prevent losing handle



FA & FB SERIES LINE TYPE HYDRAULIC OIL FILTER

FA SERIES

FEATURES:

- Spin-on filter type element interchangeable with Cross and Gresen. See page C21 for additional interchange information.
- Standard elements available with 10 Micron Phenol Coated Paper. 100 mesh suction strainer elements also available.
- Filter condition indicator available.
- Compatible with all petroleum base fluids.
- The Prince FA Series Line Type Hydraulic Filter is a high quality, low cost filtration device for use on systems with flows up to 20 GPM. A built in bypass valve is incorporated in the rugged aluminum housing.
- For return line application, a 15 PSI bypass spring is standard, with a 5 PSI spring available for suction line applications.



(optional accessory)

FB SERIES

FEATURES:

- Compatible with all petroleum base fluids.
- Spin-on type filter element interchangeable with Cross and Gresen. See page C22 for additional information.
- Standard elements available with 10 Micron Phenol Coated Paper. 100 mesh suction strainer elements also available.
- The Prince FB series line type hydraulic filter is intended for systems with flows up to 45 GPM.
- The spin-on feature enables element changes to be made quickly and easily. An optional condition indicator enables element changes to be made as they are needed.
- A bypass valve is incorporated in the filter housing to serve as a safety feature in the event of a clogged filter. Various bypass springs are available for suction or return line applications.

MODEL CODING INFORMATION

FA 1 2 0 0 - 0 0

PORT OPTION

1—3/4" NPTF

BY PASS SPRING

0—NONE
1— 5 PSI
2— 15 PSI
3—25 PSI

INDICATOR PORT LOCATION

0-NONE

00-NO ELEMENT

ELEMENT SOLD SEPARATELY BELOW CASE LOTS OF 12

INDICATOR GAGE

0-NONE

MODEL CODING INFORMATION

FB 1 2 0 0 - 0 0

PORT OPTION

1—1 1/4" NPTF

BY PASS SPRING

0 — NONE
1 — 5 PSI
2 — 15 PSI
3 — 25 PSI

INDICATOR PORT LOCATION

0 — NONE

00-NO ELEMENT

ELEMENT SOLD SEPARATELY BELOW CASE LOTS OF 6

INDICATOR GAGE

0 — NONE

SERVICE COMPONENTS

PART NUMBER.....	DESCRIPTION
FA10.....	10 MICRON ELEMENT (FA10 ELEMENT REPLACES PREVIOUS FA25 ELEMENT)
FA150	150 MICRON ELEMENT
FA.....	CANISTER THREAD SIZE 1-12 UNF-2A THREAD
270018001	NO BYPASS KIT
2700180025 PSI BYPASS KIT
27001800315 PSI BYPASS KIT
27001800425 PSI BYPASS KIT

SEE PAGE C21

SERVICE COMPONENTS

PART NUMBER.....	DESCRIPTION
FB10	10 MICRON ELEMENT (FB10 ELEMENT REPLACES PREVIOUS FB25 ELEMENT)
FB150	150 MICRON ELEMENT
FB	CANISTER THREAD SIZE 1 1/2-16 UN-2A THREAD
270018021	NO BYPASS KIT
2700180225 PSI BYPASS KIT
27001802315 PSI BYPASS KIT
27001802425 PSI BYPASS KIT

SEE PAGE C22

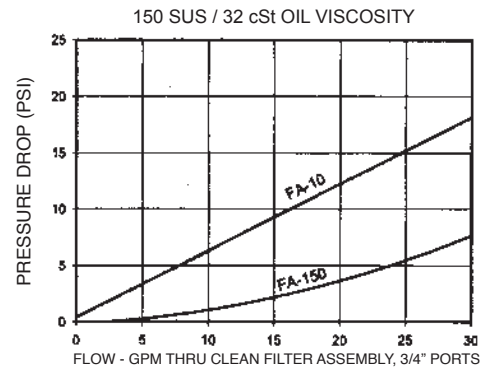


FA SERIES LINE TYPE HYDRAULIC OIL FILTER

SPECIFICATIONS

Max. Working Pressure 150 PSI
 Flow Up to 20 GPM
 Operating Temperature -65°F to 250°F
 Filter Head Material Cast Aluminum
 Gasket Material Buna N
 Shipping Wt. 2 lbs.

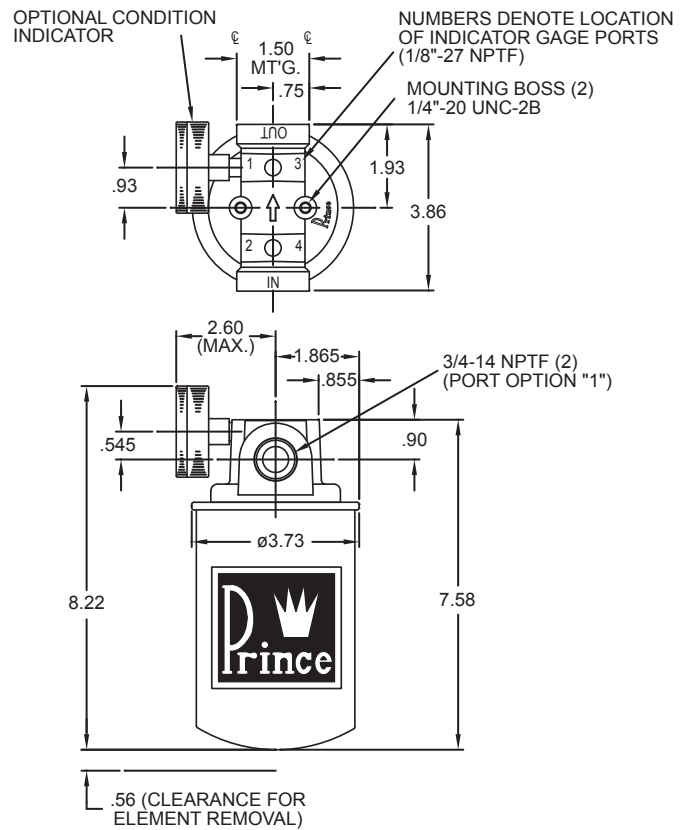
PRESSURE DROP



INTERCHANGE INFORMATION

MANUFACTURER	PART NUMBER	PRINCE PART NUMBER
CAN-FLO	RSE-30-10 RSE-30-25	FA10
CASE	S62427	FA10
CLARK/MICHIGAN 6516722	6515541	FA10
CROSS	1A9021 1A9023	FA10
DAVIS	H217307	FA10
DITCH WITCH	155910	FA10
ELGIN SWEEPER	71052	FA10
FIAT-ALLIS	70248399 702483998 72532042	FA10
FORD	193509 CONN6708A CONN8951B CONN8951C	FA10
FORD FRAM	SFD18502	FA10
GMC	6436232 6437228	FA10
GRESEN	1551, 1551001 K22001 1553, 1553003 K22002	FA10
HYSTER	180595	FA10
IHC	201021 C1 528250R1	FA10
JOHN DEERE	3080020 AT38431	FA10
JOY	1228371 1228372	FA10
KRALINATOR	L37, L54	FA10
LENZ	CP75210 CP75230	FA10
LHA	SPE1510 SPE1525	FA10
MASSEY FERGUSON	1033356M1	FA10
MICHIGAN FLUID POWER	S28 S29	FA10
PARKER HANNIFIN	92199 925023	FA10
RIPLEY	DP75210 DP75230	FA10
RYCO	Z42, Z53 Z136	FA10
SUNSTRAND	93220010	FA10
TENNANT	52582	FA10
TORO	239740	FA10
TOWMOTOR	665934	FA10
ZINGA	AE10 AE25	FA10

DIMENSIONAL INFORMATION



DIMENSIONS ARE IN INCHES, REFERENCE ONLY

PRINCE MANUFACTURING CORPORATION

NORTH SIOUX CITY, SD 57049

PHONE: 605-235-1220

FAX: 605-235-1082

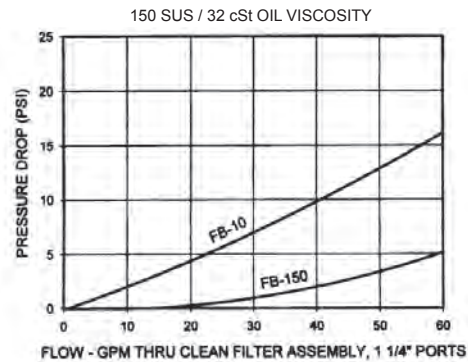


FB SERIES LINE TYPE HYDRAULIC OIL FILTER

SPECIFICATIONS

Max. Working Pressure 150 PSI
 Flow Up to 45 GPM
 Operating Temperature..... -65°F to 250°F
 Filter Head Material Cast Aluminum
 Gasket Material Buna N
 Shipping Wt. 4 1/2 lbs.

PRESSURE DROP

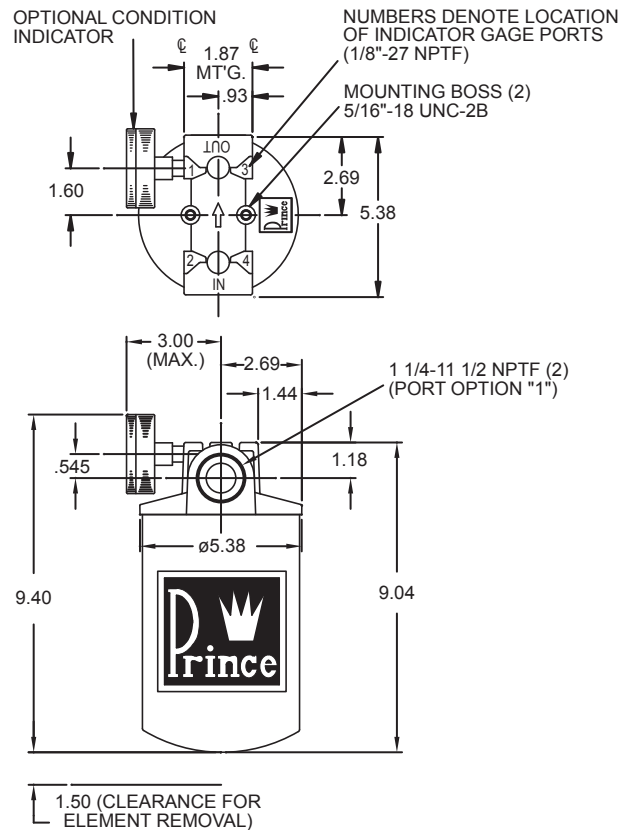


INTERCHANGE INFORMATION

* INDICATED APPLICATIONS REQUIRE GASKET #180900772
 PLEASE ORDER SEPARATELY.

MANUFACTURER	PART NUMBER	PRINCE PART NUMBER
CAN-FLO	CF50E10 RSE5010 RSE5025N	FB10*
CASE	H341974 R25844	FB10*
CATERPILLAR	342449 8J1600	FB10*
CLARK/MICHIGAN	6511280	FB10*
	6519239	FB10*
	6591038 6552507	FB10*
CROSS	1A9251 1A9253	FB10*
GMC	25011184	FB10*
GRESEN	K23018 K23019	FB10*
HYDRA-MAC	3401303	FB10*
IHC	69149C1	FB10*
JOHN DEERE	AT44696	FB10*
	AT58368	FB10*
	R16943	FB10*
	AR43261	FB10*
	AR43634	FB10*
KRALINATOR	L194	FB10*
LENZ	CP128255	FB10*
LHA	SPE5010 SPE5025	FB10*
MICHIGAN FLUID POWER	2020600 3800004 3800077 S58	FB10*
	2020030 S59	FB10*
	NEW HOLLAND	262546
OWATONNA	17032375	FB10*
PALL	HC7500SUJ4H HC9500SUJ4H	FB10*
PARKER HANNIFIN	926163B	FB10*
SULLAIR	408242	FB10*
SUNSTRAND	97006553	FB10*
TORO	8076001 445340	FB10*
TOWMOTOR	342449	FB10*
VERSATILE	15801	FB10*
VICKERS	575942 575943	FB10*
ZINGA	GCE10 GCE25	FB10*
	SE10 SE25	FB10*

DIMENSIONAL INFORMATION



DIMENSIONS ARE IN INCHES REFERENCE ONLY